

FordFiesta

Feel the difference





0.965237 of a millimetre

That's the thickness of a clay shaving. And to our designers it can make all the difference, as they hone and refine their clay prototype until they find the perfect expression of energy in motion.

The result is what we call Ford kinetic Design and we're passionate about it.

Bold, beautiful lines that you can't help falling in love with.



Actual size.

The first rule of staring:
wear sunglasses

Model shown is a Ford Fiesta Titanium 3-door with Hot Magenta metallic paint (option at extra cost) and Titanium X pack (option at extra cost).



Get stuck in traffic
so everyone can have
a good look

Model shown is a Ford Fiesta Zetec S 3-door
with Vision metallic paint (option at extra cost),
side skirts and 16" 5-spoke alloy wheels
(standard).



Life in the limelight.
Bask in the afterglow

Model shown is a Ford Fiesta Titanium 3-door with Soho upper instrument panel colour and Syracuse environment colour. Tech pack fitted (option at extra cost).



Model shown is a Ford Fiesta Zetec 5-door with Morello metallic paint and 16" 7-spoke alloy wheels (options at extra cost).





Keep in contact
Change the volume, the radio station and scroll through your MP3 tracks via convenient toggle switches, all without taking your hands off the wheel. (Standard on all series except Studio)



Untangle your life when you step into your car.
The Ford Fiesta has all the right connections already built-in.

Make the connection

Much more than music

The central control console is inspired by the latest mobile phone design and is as functional as it is beautiful. It gets you connected with Bluetooth®, Voice Control, USB and AUX for your MP3, and a screen for your phone and track info. (Some of these features are optional at extra cost)



Capless refuelling with Ford Easy Fuel

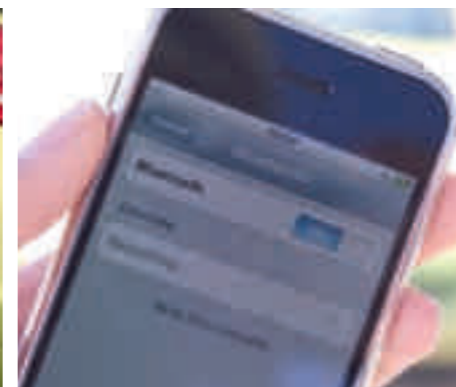
No dirty fuel caps to touch. Plus Ford Easy Fuel with its unique safeguard ensures nobody accidentally fills up with the wrong fuel. (Standard)

Bluetooth® Voice Control and USB.

Use your voice to change radio stations or CD tracks, make and receive mobile calls, control volume and temperature (where EATC fitted). (Option at extra cost)

Power-operated folding door mirrors

Just the thing for parking in narrow streets. (Standard on Titanium, option at extra cost on other selected series as part of pack).





Ambient lighting
A soft red glow discreetly highlights the interior of your Ford Fiesta.
(Standard on Zetec and Titanium)



All the experience of Ford's renowned development engineers has been poured into the Ford Fiesta to create a driving experience where every journey is an event to savour. Form and function combine perfectly to keep you relaxed and in full control.

You won't want to get out

Height- and reach-adjustable steering
Find your ideal steering wheel position for a more relaxed driving experience.



'Ford Power' starter button
Starter button replaces key, doors unlock and lock at the touch of the door handle button. Just keep the keyfob with you. (Option at extra cost on Titanium as part of pack).

Cruise control
Set your speed. Relax. Enjoy the drive. (Standard on Titanium)

Electric Power-Assisted Steering (EPAS)
A sophisticated system that makes city driving and parking effortless, yet reduces assistance at higher speed for greater control.





Long term investment
Some possessions are made to last. The Ford Fiesta has quality and durability built in from the beginning and inspires a sense of confidence that's priceless.



With sparkling accents and high quality details, the Ford Fiesta is polished and poised. Look a little deeper and you discover every single component is engineered with one objective clearly in mind: quality that's built to last.

Precious metal

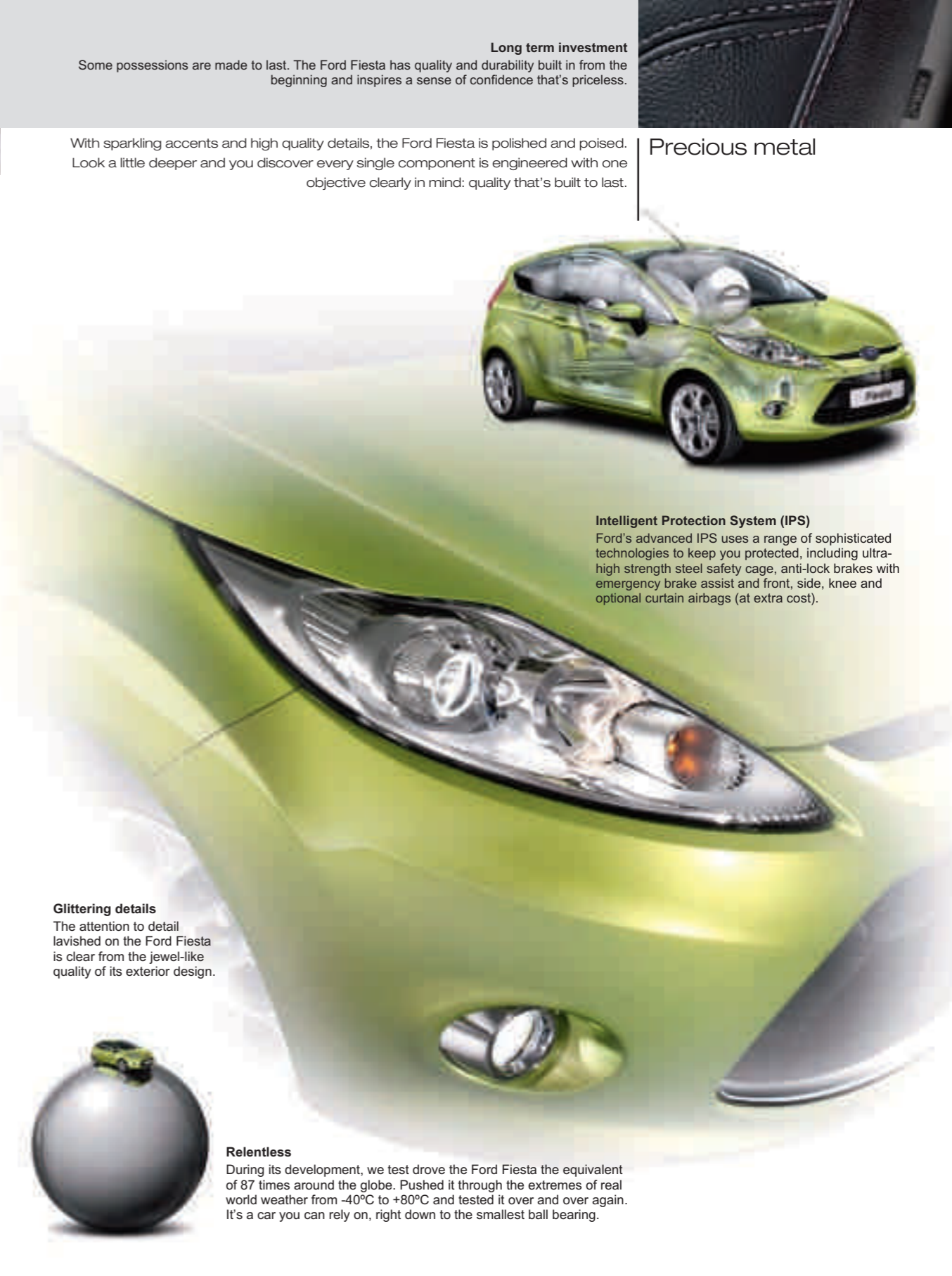


Intelligent Protection System (IPS)
Ford's advanced IPS uses a range of sophisticated technologies to keep you protected, including ultra-high strength steel safety cage, anti-lock brakes with emergency brake assist and front, side, knee and optional curtain airbags (at extra cost).

Glittering details
The attention to detail lavished on the Ford Fiesta is clear from the jewel-like quality of its exterior design.



Relentless
During its development, we test drove the Ford Fiesta the equivalent of 87 times around the globe. Pushed it through the extremes of real world weather from -40°C to +80°C and tested it over and over again. It's a car you can rely on, right down to the smallest ball bearing.





Model shown is finished in Avalon metallic paint (option at extra cost) with 15" wheels and 6-spoke covers.

Sleek looks and striking design ensures the Fiesta Edge is a vehicle that turns heads wherever you go.

Features

- 15" wheels with 6-spoke covers
- Body colour door mirror housings
- Body colour door handles
- Electrically-operated front windows with 'one shot' up and down and anti-trap technology on driver's side
- Driver's seat height adjustment
- Remote control central double locking
- Anti lock brakes with EBD
- Manual air conditioning

Seat trim and colour: Ecrin multicolour in Syracuse
 Bolster trim and colour: Mondus Max in Syracuse
 Door trim and colour: Mondus Max in Fairland
 Centre stack bezel and door handle deco strip: Ingot
 Upper instrument panel: Fairland
 Environment colour: Syracuse

Upper instrument panel in Fairland

Manual air conditioning (standard).

Centre console with Ingot finish

Headlight courtesy delay
 The headlights stay on for a few seconds to illuminate the way to your front door. (Standard)

Body colour door mirror housings
 With power-operated and heated mirrors. (Standard)

Body colour door handles
 (Standard)





Model shown is finished in Squeeze metallic paint with Bluetooth and USB (options at extra cost) and 15" 8-spoke alloy wheels (standard).

It's the attention to the smallest detail that gives the Ford Fiesta Zetec a feeling of refined luxury.

Additional to Edge

- 15" 8-spoke alloy wheels
- Front fog lights with chrome surround
- Quickclear Heated Windshield
- Trip computer
- Chrome lower front grille surround
- Chrome tailgate handle
- Chrome belt line finisher
- Headlights with chrome surround
- Three-spoke leather steering wheel
- Leather gear knob
- Ambient lighting

Seat trim and colour: Dots in Syracuse
 Bolster trim and colour: Trudie New in Syracuse
 Door trim and colour: Trudie New in Fairland
 Centre stack bezel and door handle deco strip: Stirling
 Upper instrument panel: Fairland
 Environment colour: Syracuse

Halogen projector headlights
 Produce a stronger beam. (Standard)

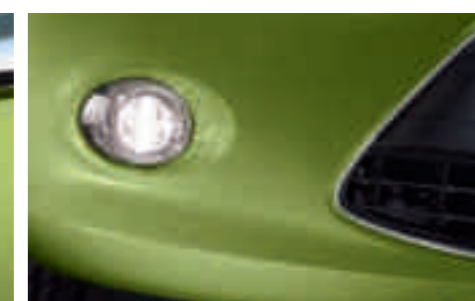
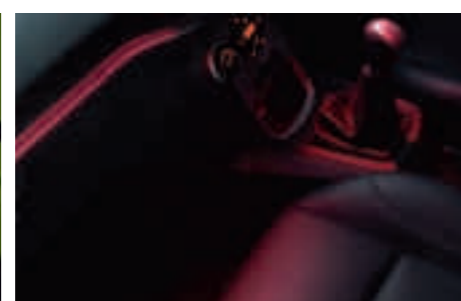
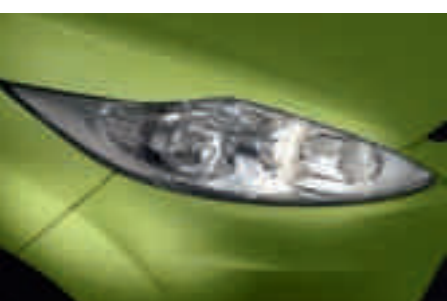
Ambient lighting
 A soft red glow emanates from the roof, glove box and centre console. (Standard)

Leather steering wheel
 With bright sterling silver colour insert. (Standard)

Trip computer
 Relays fuel economy, average speed and trip distance. (Standard)

Chrome tailgate handle
 (Standard)

Chrome lower front grille and front fog light surrounds
 (Standard)





Model shown is finished in Vision metallic paint (option at extra cost) with 16" 5-spoke alloy wheels.

The Ford Fiesta Zetec S demands attention with its dynamic stance and powerful lines.

- Body colour front and rear bumper skirts
- Body colour rear spoiler
- Three-spoke leather steering wheel
- Front fog lights
- 16" 5-spoke alloy wheels
- Headlights with chrome surround
- Lowered sports suspension
- Sports seats
- Silver insert on gear knob
- Manual air conditioning
- Trip computer
- Perimeter alarm
- Quickclear Heated Windscreen
- Alloy Cap Foot Pedals
- Side skirts

Seat trim and colour: Dots in Syracuse
 Bolster trim and colour: Mondus Max in Brilliant Blue
 Door trim and colour: Mondus Max in Brilliant Blue
 Centre stack bezel and door handle deco strip: Ingot
 Upper instrument panel: Brilliant Blue
 Environment colour: Syracuse

Lowered sports suspension
(Standard)

Front fog lights
(Standard)

Body colour rear spoiler
(Standard)

16" 5-spoke alloy wheels
(Standard)

Halogen projector headlights
Produce a stronger beam. (Standard)

Body colour bumpers
With body colour skirts (Standard)





Model shown is finished in Hot Magenta metallic paint (option) with 16" 15-spoke alloy wheels (standard). Bluetooth and USB shown (option at extra cost)

The Ford Fiesta Titanium surrounds you with contemporary luxury and technical innovation.

Additional to Zetec

- 16" 15-spoke alloy wheels
- Cruise control
- Power-operated folding door mirrors
- Privacy glass
- Electronic Automatic Temperature Control (EATC)
- Automatic headlamps
- Automatic wipers
- 2 rear speakers
- Perimeter alarm

Seat trim and colour: Dots in Soho
 Bolster trim and colour: Trudie New in Syracuse
 Door trim and colour: Trudie New in Soho
 Centre stack bezel and door handle deco strip: Stirling
 Upper instrument panel: Soho
 Environment colour: Syracuse

USB connector in ambient lighting
 Built in connectivity for your gadgets like iPod® or MP3 player. (USB Connection option at extra cost)

Electronic Automatic Temperature Control (EATC)
 Set your ideal temperature and EATC does the rest. (Standard)

Cruise control
 Set your speed. Relax. Enjoy the drive. (Standard)

Privacy glass
 The back seat and rear windows are darkened to deny prying eyes. (Standard)

17" 5-spoke alloy wheel
 (Option at extra cost as part of Titanium X Pack - available on 1.6 Petrol and 1.6 Diesel engines only).





Edge

- 15" wheels with 6-spoke covers
- Body colour door mirror housings
- Body colour door handles
- Manual air conditioning
- Electrically-operated front windows with 'one shot' up and down and anti-trap technology on driver's side
- Driver's seat height adjustment
- Remote control central double locking
- CD player with remote audio controls and AUX socket
- Anti lock brakes (ABS) with Electronic Brakeforce Distribution (EBD)
- Front, side and knee airbags
- Electric Power assisted steering
- Intelligent Protection System (IPS)

■ Bodystyles: 3- and 5-door

■ Engines:

Petrol

- 1.25 (60 PS) 5-speed manual

- 1.25 (82 PS) 5-speed manual
- 1.4 (96 PS) 5-speed manual
- 1.4 (96 PS) 4-speed automatic

Diesel

- 1.4 TDCi (68 PS) 5-speed manual

Zetec

Additional to Edge

- Headlights with chrome surround
- Chrome lower front grille surround
- Chrome tailgate handle
- Chrome belt line finisher
- Front fog lights with chrome surround
- 15" 8-spoke alloy wheels
- Three-spoke leather steering wheel
- Leather gear knob
- Trip computer
- Ambient lighting
- Quickclear Heated Windshield

■ Bodystyles: 3- and 5-door

■ Engines:

Petrol

- 1.25 (82 PS) 5-speed manual
- 1.4 (96 PS) 5-speed manual
- 1.4 (96 PS) 4-speed automatic

Diesel

- 1.4 TDCi (68 PS) 5-speed manual
- 1.6 TDCi (90 PS) 5-speed manual

Zetec S

- Body colour front and rear bumper skirts
- Side skirts
- Alloy pedal cappings
- Quickclear Heated Windshield
- Front fog lights
- 16" 5-spoke alloy wheels
- Body colour rear sports spoiler
- Headlights with chrome surround
- Lowered sports suspension
- Sports seats
- Silver insert on gear knob
- Manual air conditioning
- Trip computer
- Three-spoke leather steering wheel
- Perimeter alarm

■ Bodystyle: 3-door

■ Engines:

Petrol

- 1.6 (120 PS) Ti-VCT 5-speed manual

Diesel

- 1.6 TDCi (90 PS) 5-speed manual

Titanium

Additional to Zetec

- 16" 15-spoke alloy wheels
- Cruise control
- Power-operated folding door mirrors
- Privacy glass
- Electronic Automatic Temperature Control (EATC)
- Automatic headlamps
- Automatic wipers
- 2 rear speakers
- Perimeter alarm

■ Bodystyles: 3- and 5-door

■ Engines:

Petrol

- 1.4 (96 PS) 5-speed manual
- 1.4 (96 PS) 4-speed automatic
- 1.6 (120 PS) Ti-VCT 5-speed manual

Diesel

- 1.4 TDCi (68 PS) 5-speed manual
- 1.6 TDCi (90 PS) 5-speed manual





The Individual finish
Experience a level of luxury usually found only in much larger cars. Our designers have worked with premium leather and high-grade materials to create the ultimate style statement. Take a look at the detailed craftsmanship. You're travelling first class.

Get behind the wheel and you feel like you're stepping into the pages of a fashion magazine. Always in season, red is the colour of passion. Individual Red Style will ignite yours.

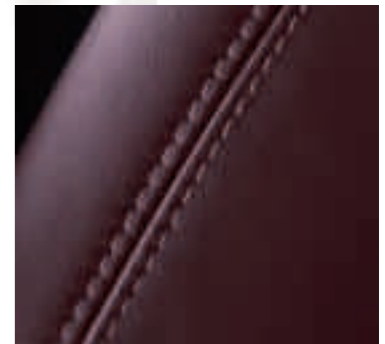
Individual Red Style



Steering wheel and instrument panel.



Leather gearshift knob



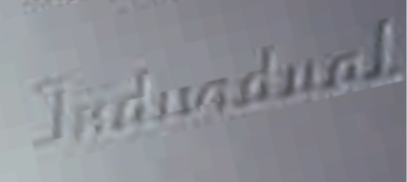
Premium leather with contrast stitching



Premium velour mat

Leather seat trim
Beautifully-stitched red and silver leather embossed with the 'Individual' logo.

Leather door insert
Individual Red Style is exclusively available on Ford Fiesta Titanium.



Aluminium pedals
Pedal set with anti-slip rubber inserts. (Standard on Zetec S).



Dive into the Individual Blue Style and experience a sporty look that complements the Ford Fiesta's dynamic design. Bold and purposeful, it gives you a feeling of cool confidence when you're behind the wheel.

Individual Blue Style

Enhance the refinement of your Ford Fiesta with a choice of interior styling options. They include special illumination details that add extra ambience to the interior of your car.

Interior styling



Steering wheel and instrument panel

Scuff plates and premium velour floor mats
Elegant additions that welcome and protect. Scuff plates are also available without illumination. (Option at extra cost)



Leather handbrake
Chrome release button and high-grade leather in a choice of three colours, shown here in Syracuse. (Option at extra cost and accessory)



Leather gearshift knob



Premium velour mat

Leather seat trim with leather door insert

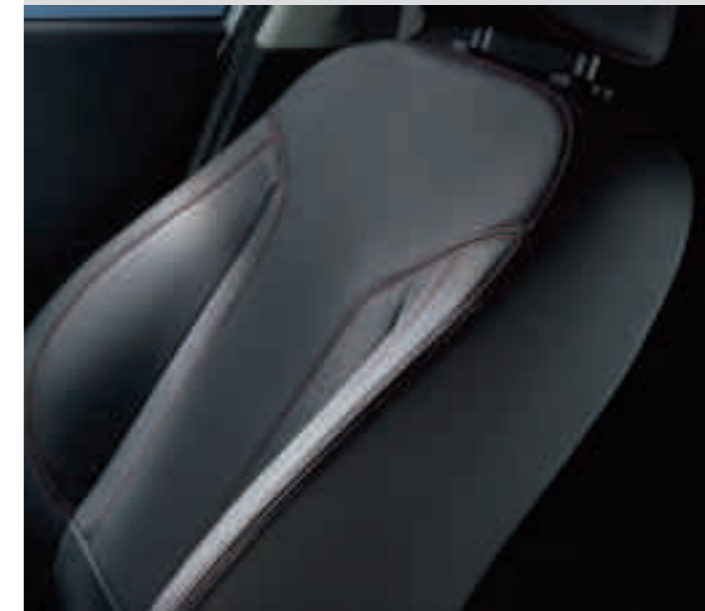
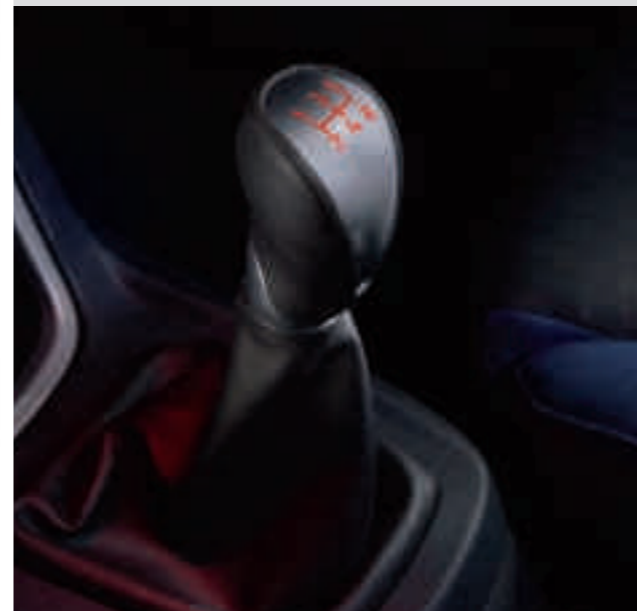


Leather gearshift knob
Aluminium look insert and high-grade leather. Also available without illumination. (Option at extra cost)

Leather sports seats



Premium leather with contrast stitching





Central control console

The elegantly designed console offers smooth fingertip control.

USB port

Built in connectivity for your gadgets like iPod® or MP3 player. Lets you listen to, and operate, your player via the car's audio system. (Option at extra cost) A dedicated iPod® connector cable is available as an accessory.



Choose your In Car Entertainment (ICE) pack and control it from the striking centre console.

Audio and connectivity



Remote audio controls

Your hands on the wheel and your MP3 on the right track. (Remote audio controls and MP3 control are standard on all series except Studio)

Smart screen

Ideally positioned to give you instant track and mobile information.

CD/Radio

CD/radio with MP3 compatibility and AUX socket. (Standard)

Bluetooth® and USB

Bluetooth®handsfree phone and USB port with voice control and digital music streaming (option at extra cost – phone not included).





Body colour front bumper extension and Anthracite spoiler lip*



Make a statement with this styling kit, perfectly designed to complement your Ford Fiesta and make it stand out from the crowd.

Exterior styling kit

Full exterior styling kit*

- Unique front bumper extension and spoiler lip
- Rear bumper skirt
- Side skirts
- Unique lower mesh grille
- Large rear spoiler



16" 7-spoke alloy wheel
Option at extra cost.

*Kit is available as an option at extra cost (on 3-door Titanium only) and as an accessory. All items are also available separately as accessories.

Model shown is a Ford Fiesta Titanium 3-door with Squeeze metallic paint, Titanium X Pack and full exterior styling kit (Options at extra cost)

Large rear spoiler*
Gives an aerodynamic finish to the roof line.

Rear bumper skirt*
With integrated diffuser in Anthracite.



Make a bold statement with the 17" 5-spoke alloy wheel. (Option and accessory).



Add another personal touch to your Ford Fiesta from a wide choice of dazzling wheels.

Wheels

Scuff plate

Emblazoned with the Ford logo, these scuff plates welcome and protect. (Front set, option and accessory)



15" 8-spoke alloy wheel
(Standard on Zetec and accessory)

15" 5-spoke alloy wheel
(Accessory)

15" 5x2-spoke alloy wheel
(Option and accessory)

16" 5-spoke alloy wheel
(Standard on Zetec S and accessory)



14" wheel cover
(Standard on Studio)

14" 6-spoke wheelcover
(Standard on ECONetic)

15" 6-spoke wheel cover
(Standard on Edge)

16" 15-spoke alloy wheel
(Standard on Titanium)

14" 6-spoke alloy wheel
(Accessory)

15" 4-spoke 'Sport' alloy wheel
(Accessory)

16" 7-spoke alloy wheel
(Option and accessory)





Thule ProRide bike carrier
Shown with Ford Boutique mountain bike. (Accessory)



Make the most of the great outdoors with a wide range of travel accessories, all available from your local Ford Dealer.

More versatility

ClimAir® sunblinds

Tailored blinds filter and reduce sun glare through the rear windows. Can be used with the window open.



Thule ProRide bike carrier

Lockable carrier designed for frames up to 80 mm in diameter.



Base roof load carrier

Lockable base load carrier compatible with a range of attachments.



Britax Römer child seat

Various seats available for all ages, also with ISOFIX.

Thule lockable roof boxes

Protect your possessions from theft and the elements. Available in different sizes.



Mudflaps*

Kits for front and rear.



Tow bar*

Detachable tow bar with 7 or 13 pin electrical connector kit.

Waeco 12v coolbox

High-performance 12v cool boxes available in a range of sizes.



Anti-slip boot mat

Waterproof mat protects luggage compartment from dirt, wear and tear.



*Available on all series except Zetec S. Not available with full exterior styling kit.

ClimAir® wind deflector
Reduces turbulence and noise for a more enjoyable drive with the windows down, even when it's raining. (Accessory)



Parking distance kit*
Audible warnings help you park in tight spaces. Available for front and rear, or just rear. (Option and accessory)
* Front parking distance kit available on all series except Zetec S. Not available with full exterior styling kit.



We are all beginning to understand the impact that mobility is having on climate change. While we can't change things overnight, we are working very hard to find solutions.

Our range of finance, insurance, service and assistance options is designed with just one thing in mind – making life easy for you.

Making a difference

On Ford Mondeo, Ford S-MAX and Ford Galaxy, our optional Flexifuel engine, fuelled by E85, is achieving emission reductions of around 30% to 80%** compared to conventional petrol engines. E85 is a mixture of 85% plant-derived ethanol and 15% petrol, but these models can run on any mixture of the two – even 100% petrol.

New low emission diesel ECONetic derivatives are now available. Ford Fiesta ECONetic delivers more than 76.3 mpg, emitting just 98 g/km of CO₂. Ford Focus ECONetic delivers more than 65mpg, emitting just 114 g/km of CO₂ and Ford Mondeo ECONetic delivers more than 54 mpg, emitting 139 g/km of CO₂.

Protecting the future

Using our Product Sustainability Index, a design for sustainability management tool, we are addressing the environmental, social and economic impacts of our vehicles from the earliest stages of their development*.

We are working on a wide range of vehicle technologies from biofuels to hybrids and clean diesels, and in the long term to hydrogen fuel-cell technology with the potential for near zero CO₂ emissions.

Improving our manufacturing facilities

Elsewhere, we are working to minimise the impact of our facilities on the environment, for example by pioneering on-site generation of electricity from sun and wind.

Recycling for good

In the interests of sustainability, many of our components contain recycled and renewable content. All Ford vehicles are at least 85% recyclable and 95% recoverable in accordance with ISO 22628. We offer free take-back for qualifying vehicles at the end of their lives. All our take-back points are fully licensed and must also meet additional Ford quality standards for the professional receipt, treatment and recovery of end-of-life vehicles.

This brochure has been produced on paper based on fibres from sustainable forestry, using a 100% chlorine-free (TCF) bleaching process.

*For more about this topic, see www.ford.com/go/sustainability

**Dependent on feedstock used and production process. (Source: EUCAR CONCAWE study.) Ford supports the sustainable production of biofuels.

Ford Credit

When it comes to financing your vehicle, your Ford Dealer can remove the need for lengthy phone calls, endless online surfing and form-filling. They can help you complete an application and will get a decision, usually within 15 minutes.

So what can your Ford Dealer provide? **Ford Options** offers increased flexibility if you want to change your car more often; **Ford Acquire** is ideal for private and business users who want a more straightforward financing plan; **Ford Business Partner Contract Hire*** provides an affordable, convenient and flexible way to finance your business vehicle; and **Ford Insure**** is our comprehensive motor insurance product, designed specifically for Ford drivers.

Finance subject to status. Guarantees/indemnities may be required. Freeport Ford Credit.

*Business Partner Contract Hire is provided by Lex Vehicle Leasing Limited, trading as Ford Business Partner, Heathside Park, Heathside Park Road, Stockport SK3 0RB.

**Ford Insure is underwritten and administered by Royal & Sun Alliance Insurance plc (No. 93792). Registered in England and Wales at St Mark's Court, Chart Way, Horsham, West Sussex, RH12 1XL. Authorised and regulated by the Financial Services Authority. For your protection, telephone calls will be recorded and may be monitored.

Services

Ford Protect

Your new Ford is protected by a 3-year/60,000-mile Ford Protect Classic Plan Warranty, and comes with Ford Assistance roadside cover throughout the UK and Europe for 1 year. You can also upgrade to a Ford Protect Premium Plan, giving you the option of scheduled servicing and extended Ford Assistance.

Ford Service

Like any vehicle, your new Ford needs servicing regularly to keep it in the best condition and to maintain its value. The Ford authorised repairer network is independently quality checked to ensure the highest standards of workmanship are maintained. Ford has the largest repairer network in the UK, and uses Ford-trained technicians, Ford-specific tools and the latest computerised diagnostic equipment specifically for your Ford.

Ford Accident Repair Centres

Should your Ford require accident repair, an approved Ford Accident Repair Centre is the best place to return your vehicle to its pre-accident condition. Repairers displaying the Ford Accident Repair Centre sign meet the rigorous customer service, technical and quality standards demanded by Ford. Ford trained technicians, the latest repair equipment and the use of original parts mean that the future safety and value of your vehicle are assured.

Contacts

Ford Customer Relationship Centre

In the unlikely event that your Ford Dealer can't help you or if you need to speak to us directly, call 0845 841 1111 at local rates.

Ford Rental – local service nationwide

Car and van rental from our latest model range. Contact your local Ford Dealer for more information.

Ford Mobility

Our MAGIC care centre provides free information on all motoring and mobility issues, including special offers for HRDLA and Motability recipients. Call free on 0800 240 241.

Exterior equipment

	Studio	Edge	Econetic	Zetec	Zetec S	Titanium
Design features						
Door mirrors – Black housing, electric operation, integrated side indicator	●					
Door mirrors – Body colour housing, heated, electric operation, integrated side indicator		●	●	●	●	
Door mirrors – Electrically foldable (requires remote locking)		□		□	□	●
Bumpers – Front and rear, body colour with grey self-colour grille insert	●	●	●			
Bumpers – Front, chrome grille surround				●		●
Bumpers – Sports styled body colour with skirts and grey colour sport grille insert					●	
Front fog lights – Black bezel rings					●	
Front fog lights – Chrome bezel rings				●		●
Rear privacy glass					□	●
Door handles – Body colour		●	●	●	●	●
Tailgate handle – Body colour	●	●	●		●	
Tailgate handle – Body colour with chrome finisher				●		●
Chrome belt line finisher				●		●
Rear spoiler – Body colour	●	●	●	●		●
Rear spoiler – Sport body colour					●	□
Side Skirts(3-door only)					●	□
Wheels						
Steel – 14"x5.5", 7-spoke wheel covers, 175/65 tyres	●		●			
Steel – 15"x6", 6-spoke wheel covers, 195/50 tyres		●				
Alloy – 15"x6", 8-spoke, 195/50 tyres				●		
Alloy – 16"x6.5", 5-spoke, 195/45 tyres					●	
Alloy – 16"x6.5", 15-spoke, 195/45 tyres						●
Alloy – 15"x6", 5x2-spoke, 195/50 tyres		○				
Alloy – 16"x6.5", 7-spoke, 195/45 tyres				○		○
Alloy – 17"x7", 5-spoke, 205/40 tyres					□	□
Tyre mobility kit	●	●	●	●	●	●
Spare – 14"x5.5" steel (not available with detachable towbar)	○	○		○	○	○
Locking wheel nuts (only with alloy wheels)		□		●	●	●

Exterior equipment

	Studio	Edge	Econetic	Zetec	Zetec S	Titanium
Bodystyling packs						
Full Exterior Styling Kit (3 door) – Front, rear and side skirts, unique lower bumper grille and rear spoiler (not available with Front parking sensor)						○
Convenience features						
Ford Easy Fuel capless refuelling system with mis-fuel inhibit	●	●	●	●	●	●
Headlights – Twin chamber halogen reflector with black bezel	●	●	●			
Headlights – Halogen projector with chrome bezel				●	●	●
Headlights – Headlight Courtesy Delay feature	●	●	●	●	●	●
Rear parking sensor		□		□	□	
Parking distance sensor – Front and rear		○	○	○		○
Tailgate wash/wipe (includes reverse gear wipe)	●	●	●	●	●	●
Wipers – Front, variable intermittent and anti-drip feature	●	●	●	●	●	
Wipers – Automatic with rain sensor (includes automatic headlights)				○	○	●
Windscreen – Heated		○	○	●	●	●
Centre high-mounted rear brake light	●	●	●	●	●	●
Option packs						
City Pack – Rear parking distance sensor and electrically foldable door mirrors		○		○	○	
Titanium X Pack – 17" Alloy Wheels, ESP (inc EBA), Leather Trim and Rear Power Windows (5dr only). Available on 1.6 Petrol and 1.6 Diesel Engine only.						○
Tech Pack – Ford Keyfree system, Ford 'Power' starter button, Bluetooth, USB connection for external music devices						○
Street Pack – 17" Alloys, ESP (inc EBA) and Privacy Glass					○	

● = Standard, ○ = Option, at extra cost, □ = Part of option pack, at extra cost

Interior equipment

	Studio	Edge	Econetic	Zetec	Zetec S	Titanium
Design features						
Floor mats – Front and rear, velour					□	●
Gear knob soft feel (black insert surround and gaiter ring)	●	●	●		●	
Gear knob leather (chrome insert surround and gaiter ring)				●		●
Handbrake release knob – Chrome	●	●	●	●	●	●
Interior Pack #1 – Stainless steel scuff plates with logo, unique gearshift knob, unique handbrake cover and velour front and rear floor mats (manual transmission only)					○	○
Interior Pack #2 (Illumination Pack) – Stainless steel scuff plates with illuminated logo, unique gearshift knob, unique handbrake cover and velour front and rear floor mats (manual transmission only)					○	○
Individual Red Style (Unique Interior Finish – Deep red/silver) – steering wheel executions, leather gearshift knob, premium leather seat trim and premium velour mats(manual transmission only)						○
Individual Blue Style (Unique Interior Finish – blue/silver) –steering wheel executions, leather gearshift knob, premium leather seat trim and premium velour mats (manual transmission only)					○	
Pedal covers – Alloy cappings					●	
Steering wheel – 3-spoke, PU black	●	●	●			
Steering wheel – 3-spoke, leather-trimmed				●	●	●
Steering wheel column – Rake- and reach-adjustable	●	●	●	●	●	●
Audio and communication systems						
Radio/CD, MP3 compatible, 2-line display and 2 front speakers	●					
Radio/CD, MP3 compatible, 2-line display, 4 front speakers, remote audio controls and AUX connection for external music devices		●	●	●	●	
Radio/CD, MP3 compatible, 2-line display, 4 front speakers, 2 rear speakers, remote audio controls and AUX connection for external music devices						●
Radio/CD, MP3 compatible, matrix display, 6 speakers, remote audio controls, AUX and USB connection for external music devices, Bluetooth® Hands-Free Telephone and Voice Control System (includes trip computer on Edge/Econetic)		○	○	○	○	○
Radio/CD, MP3 compatible, matrix display, 6 speakers, remote audio controls, AUX and USB connection for external music devices, Bluetooth® Hands-Free Telephone and Voice Control System and Mobile Navigation (includes trip computer on Edge/Econetic)		○	○	○	○	○
Climate control						
Air conditioning – Manual		●	●	●	●	
Air conditioning – Electronic Automatic Temperature Control					○	●

Interior equipment

	Studio	Edge	Econetic	Zetec	Zetec S	Titanium
Comfort and convenience						
Trip computer		□	□	●	●	●
Cruise control						●
Accessory power socket (12V)	●	●	●	●	●	●
Centre console – with trinket tray, 2 cup holders and a large stowage bin	●	●	●	●	●	●
Courtesy light – For front passengers, overhead with theatre-style dimming; for rear passengers and in load compartment	●	●	●	●	●	●
Courtesy light – With map-reading lights				●		●
Aesthetic Lighting Package – Instrument panel candle lighting, illumination of centre stack open stowage, footwell lights and 'submarine' lighting				●		●
Stowage pockets – Front passenger seat back		●	●		●	
Stowage pockets – Driver and front passenger seat backs				●		●
Windows – Electric front with one-touch lowering/closing on driver's side		●	●	●	●	●
Windows – Electric front and rear with one-touch lowering/closing on driver's side (5 door only)						□
Seats and Seat Belts						
Front seats – Sports-style						●
Front seats – 2-way adjust head restraints	●	●	●	●	●	●
Front seat – Driver's lumbar support adjustment						○
Front seat – Driver's seat manual 2-way adjustment	●					
Front seat – Driver's seat manual 4-way adjustment		●	●	●	●	●
Front seat – Passenger's seat manual 2-way adjustment	●	●	●	●	●	●
Rear seat – 60/40 split folding back and fixed cushion	●	●	●	●	●	●
Rear seat – centre head restraints	○	○	○	○	○	○
Seat Belts - Front, inertia reel with height adjustable mounts. Rear - three inertia reel lap and diagonal.	●	●	●	●	●	●
Leather Pack – Full leather trim and leather-trimmed steering wheel						○
Leather Pack Zetec S – Full leather trim, sport-style front seats and leather-trimmed steering wheel					○	
Loadspace						
Removable package tray (3/5 door)	●	●	●	●	●	●
Load floor carpet	●	●	●	●	●	●

● = Standard ○ = Option, at extra cost.

The Bluetooth® word mark and logos are owned by the Bluetooth SIG, Inc. and any use of such marks by Ford Motor Company is under license. Other trademarks and trade names are those of their respective owners.

Safety and security

	Studio	Edge	Econetic	Zetec	Zetec S	Titanium
Safety						
Anti-lock brakes with Electronic Brake-force Distribution (EBD)	●	●	●	●	●	●
Electronic Stability Programme (ESP) with Traction Assist (includes Emergency Brake Assist (EBA))	○	○	○	○	○	○
Auto Hazard Warning Lights – Automatic activation of indicators when emergency braking is applied	●	●	●	●	●	●
Airbags – Driver's and front passenger's*	●	●	●	●	●	●
Airbag – Front passenger's airbag de-activation switch* (dealer-fitted accessory only)	○	○	○	○	○	○
Side Airbags – head and thorax (includes knee airbag and active head restraint)	●	●	●	●	●	●
Curtain Airbags – includes side-airbag pack (thorax only), knee airbag and active head restraint	○	○	○	○	○	○
Seat belts - Seat buckle pre-tensioners on front seat belts	●	●	●	●	●	●
Seats - ISOFIX mounting brackets for child seat (rear outer seats only)	●	●	●	●	●	●
Security						
Second Remote Ignition Key		○/□	○/□	○/□	●	●
Perimeter Alarm (includes 2nd Remote Ignition Key)		○	○	○	●	●
Ford Key Free system (includes Ford Power starter button)						□

Mechanical features

	Studio	Edge	Econetic	Zetec	Zetec S	Titanium
Steering						
Electric Power Assisted Steering (EPAS)	●	●	●	●	●	●
Suspension						
Suspension – Standard tune	●	●		●		●
Suspension – Sport tune with lowered ride height			●		●	
Suspension – Front stabiliser bar	●	●	●	●	●	●

● = Standard, ○ = Option, at extra cost.

Fuel, performance and emissions

	Trans	Maximum Power PS (kW)	Torque Nm (Nm with overboost)	CO ₂ emissions (g/km) ⁹⁰	Fuel consumption in L/100 km (mpg) ⁹⁰			Performance ⁹			Gross Vehicle Mass (kg)	Max. towable mass (kg)
					Urban	Extra Urban	Combined	Max Speed kph (mph)	0-62 mph (secs)	31-62 mph* (secs)		
3/5 door Fiesta												
1.25 Duratec Stage V	M5	60 (44)	109	127	7.3 (38.7)	4.4 (64.2)	5.5 (51.4)	152 (94)	16.9	18.4	1495	500
1.25 Duratec Stage V	M5	82 (60)	114	133	7.5 (37.7)	4.7 (60.1)	5.7 (49.6)	168 (104)	13.3	17.4	1495	600
1.4 Duratec	M5	96 (71)	128	133	7.5 (37.6)	4.6 (61.4)	5.7 (49.6)	175 (109)	12.2	16.2	1495	800
1.4 Duratec	A4	96 (71)	128	154	8.9 (31.7)	5.1 (55.4)	6.5 (43.4)	166 (103)	13.9	n/a	1530	900
1.6 Duratec Ti-VCT	M5	120 (88)	152	139	7.9 (35.7)	4.7 (60.1)	5.9 (47.9)	193 (120)	9.9	10.8	1500	900
1.4 Duratorq TDCi	M5	68 (50)	160	110	5.3 (53.3)	3.5 (80.7)	4.2 (67.2)	162 (101)	14.9	13.9	1540	750
1.6 Duratorq TDCi	M5	90 (66)	212	110	5.2 (54.3)	3.6 (78.5)	4.2 (67.2)	175 (109)	11.9	9.9	1555	750
1.6 Duratorq + DPF TDCi	M5	90 (66)	200	98	4.6 (61.4)	3.2 (88.3)	3.7 (76.3)	179 (111)	12.3	11.8	1555	750

*In 4th gear. ⁹Ford test figures. ⁹⁰All CO₂ emissions figures in g/km and fuel consumption figures in L/100 km are from officially approved tests in accordance with EEC Directive 1999/100/EC. The CO₂ emissions and fuel consumption test figures shown in the chart do not express or imply any guarantee of the emissions or fuel consumption of a car of the class in question. All the figures are based on tests conducted on vehicles with standard wheels and tyres; optional or accessory wheels and tyres may have an effect on the emissions and fuel consumption of a vehicle. **Note:** All vehicles are Durashift 5-speed manual unless otherwise stated. ¹The fuel economy data published above relates to use of petrol 95 RON; use of alcohol fuel or a mixture of petrol and alcohol will lead to other fuel economy data. BP Ultimate, a range of advanced performance fuels, the perfect partner to meet the most demanding needs of Ford's class-leading technology. BP Ultimate can boost power and acceleration, lower exhaust emissions and improve fuel economy, compared with ordinary fuels. **M5** = 5 Speed Manual, **A4** = 4 Speed Auto.

Insurance groups

	Studio	Edge	Econetic	Zetec	Zetec S	Titanium
3/5 door Fiesta						
1.25 Duratec 60PS	1E	♦				
1.25 Duratec 82PS	♦	♦		4E		
1.4 Duratec		♦		4E		4E
1.4 Duratec Automatic Transmission		♦		4E		4E
1.6 Duratec Ti-VCT					6E	6E
1.4 Duratorq TDCi	3E	♦		4E		4E
1.6 Duratorq TDCi				4E	4E	5E
1.6 Duratorq TDCi with DPF			4E			

* Insurance rating not available at time of print. Please refer to ford.co.uk for latest insurance information.

Dimensions

	3-door	5-door
Overall length (mm)	3950	3950
Overall length (mm) Sport version	3953	–
Overall length (mm) Bumper Styling Kit	3958	3958
Overall width with mirrors (mm)	1973	1973
Overall width without mirrors (mm)	1722	1722
Overall width folded mirrors (mm)	1787	1787
Overall height (mm) min	1433	1433
Overall height (mm) max	1481	1481
Turning circle – kerb to kerb (m)	10.2	10.2
Luggage capacity (litres)[†]		
5-seat mode (with tyre repair kit)	295	295
5-seat mode (with steel spare)	281	281
2-seat mode (with tyre repair kit)	979	979
2-seat mode (with steel spare)	965	965
Fuel tank capacity (litres)		
Petrol	42	42
Diesel	40	40

[†]Measured in accordance with ISO 3832. Dimensions may vary dependent on the model and equipment fitted.

Exterior colours

Solid colours

- 1 Colorado Red
- 2 Frozen White

Metallic colours*

- 3 Avalon
- 4 Moondust Silver
- 5 Ocean
- 6 Squeeze
- 7 Sea Grey
- 8 Tango
- 9 Panther Black
- 10 Morello
- 11 Vision
- 12 Hot Magenta



1



2



4



5



3



7



8



6



10



11

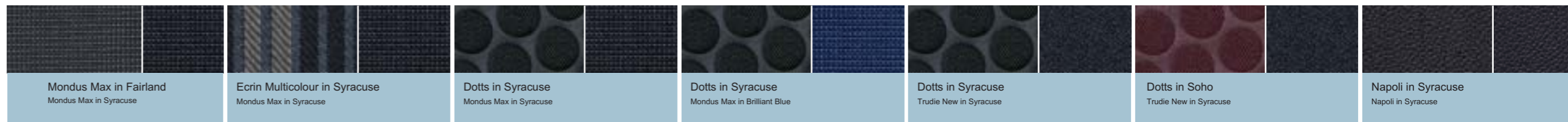


9



12

*At extra cost.



Trim and body colour availability

Model	Studio	Edge / Econetic	Zetec	Zetec S	Titanium							
Seat trim and colour	Mondus Max in Fairland	Ecrin Multicolour in Syracuse	Dotts in Syracuse	Dotts in Soho	Dotts in Syracuse	Napoli Leather in Syracuse	Dotts in Syracuse	Napoli Leather in Syracuse	Dotts in Syracuse	Napoli Leather in Syracuse	Dotts in Soho	Napoli Leather in Syracuse
Seat bolster trim and colour	Mondus Max in Syracuse	Mondus Max in Syracuse	Trudie New in Syracuse	Trudie New in Syracuse	Mondus Max in Syracuse	Napoli Leather in Syracuse	Mondus Max in Brilliant Blue	Napoli Leather in Syracuse	Trudie New in Syracuse	Napoli Leather in Syracuse	Trudie New in Syracuse	Napoli Leather in Syracuse
Door trim and colour	Mondus Max in Fairland	Mondus Max in Fairland	Trudie New in Fairland	Trudie New in Soho	Mondus Max in Fairland	Mondus Max in Fairland	Mondus Max in Brilliant Blue	Mondus Max in Brilliant Blue	Trudie New in Fairland	Trudie New in Fairland	Trudie New in Soho	Trudie New in Soho
Centre stack bezels / Door handle deco strips	Syracuse Metallic	Ingot	Stirling	Stirling	Ingot	Ingot	Ingot	Ingot	Stirling	Stirling	Stirling	Stirling
Upper instrument panel / Environment colour	Fairland / Syracuse	Fairland / Syracuse	Fairland / Syracuse	Soho / Syracuse	Fairland / Syracuse	Fairland / Syracuse	Brilliant Blue / Syracuse	Brilliant Blue / Syracuse	Fairland / Syracuse	Fairland / Syracuse	Soho / Syracuse	Soho / Syracuse
Solid body colours												
Colorado Red	●	●	●		○				●	○		
Frozen White		●	●	●	●	○	●	○	●	○	●	○
Metallic body colours												
Avalon		○	○						○	○		
Hot Magenta			○	○					○	○	○	○
Moondust Silver	○	○	○	○	○	○	○	○	○	○	○	○
Morello		○	○	○					○	○	○	○
Ocean	○	○	○						○	○		
Panther Black	○	○	○	○	○	○			○	○	○	○
Sea Grey					○	○			○	○	○	○
Squeeze		○	○						○	○		
Tango		○	○						○	○		
Vision	○	○	○		○	○	○	○	○	○	○	○

● = Standard, ○ = Option, at extra cost.



Illustrations, descriptions and specifications. This brochure was correct at the time of going to print. However, Ford policy is one of continuous product development. The right is reserved to change specifications, colours and prices of the models and items illustrated and described in this publication at any time. For the latest details always consult your Ford Dealer. **Optional equipment.** Throughout this publication, wherever a feature is described as being an 'Option' or 'Optional Fitment/Pack', etc., you should assume that it will be at extra cost to the base vehicle, unless specifically stated to the contrary. All models and colour combinations are subject to availability. **Note.** Some images portrayed are of a pre-production model and/or are computer generated, therefore, the design/features on the final version of the vehicle may differ in various respects. In addition, some of the features shown on the vehicles may be optional. **Note.** This brochure contains both original Ford accessories as well as a range of carefully selected products from our suppliers, which are featured under their own brands. All supplier branded products are subject to warranty terms defined by the relevant suppliers and do not lie within the responsibility of Ford. **Note.** The Bluetooth® word mark and logos are owned by the Bluetooth SIG, Inc. and any use of such marks by Ford Motor Company is under licence. Other trademarks and trade names are those of their respective owners.

The Government fuel figures do not express or imply any guarantee of the fuel consumption of any particular car. The cars themselves have not been tested and there are inevitably differences between individual cars of the same model. In addition, a car may incorporate particular modifications. Furthermore, the driver's style and road and traffic conditions, as well as the extent to which the car has been driven and the standard of maintenance, will affect its fuel consumption. **Insurance groups** are only as recommended by the Association of British Insurers. You should always consult your insurance adviser for confirmation.



Ford recommends BP.



Published by Ford Motor Company Limited.
Brentwood, Essex, England.
Registered in England No. 235446.
FA 1540/3
BJN 306546. FoE H38E.
PN 871505/0809/100m/GBR en.
August 2009.
© Ford Motor Company Limited.

www.ford.co.uk

