

FordMondeo

Feel the difference





0.965237 of a millimetre

That's the thickness of a clay shaving. And to our designers it can make all the difference, as they hone and refine their clay prototype until they find the perfect expression of energy in motion.

The result is what we call Ford kinetic Design and we're passionate about it.

Bold, beautiful lines that you can't help falling in love with.



Actual size.

The Ford Mondeo

Don't think. Feel



"I had to look twice"

New Ford kinetic Design:
• Dynamic lines • Muscular shoulder line •
Adaptive Front lighting System (AFS) with
static cornering lights • Ford Easy Fuel capless
refuelling system
Some features available as option only. Please check with your Ford
Dealer.



"I want a go"

Driver-oriented cockpit:

- 'Ford Power' starter button • Human Machine Interface (HMI) with Ford Convers+
- Bluetooth® with Voice Control • State-of-the-art touchscreen DVD navigation system with USB port

Some features available as option only. Please check with your Ford Dealer.



“Can I go around again?”

Refinement and outstanding driving dynamics:

- Interactive Vehicle Dynamics Control (IVDC) with Continuously Controlled Damping (CCD)
- MacPherson front suspension system • ‘Control Blade’ multi-link rear suspension system • Adaptive Cruise Control (ACC) with Forward Alert (FA) • Automatic headlights and rain-sensing wipers

Some features available as option only. Please check with your Ford Dealer.



"My needs change"

Ability without compromise:

- Up to 1,733-litre luggage capacity
- Roof rails (Estate)
- 60:40 split rear seatback and cushion
- Sliding load floor (Estate)
- Hill Launch Assist
- 18" alloy wheels

Some features available as option only. Please check with your Ford Dealer.



"I trust my instincts"

Your choice of:

• 4-door • 5-door • Estate • Edge • Zetec •
ECONetic • Ghia • Titanium • Titanium X •
Titanium X Sport
• 110 PS to 220 PS petrol engines • 100 PS to
175 PS diesel engines • 5-speed or 6-speed
manual and 6-speed automatic gearboxes

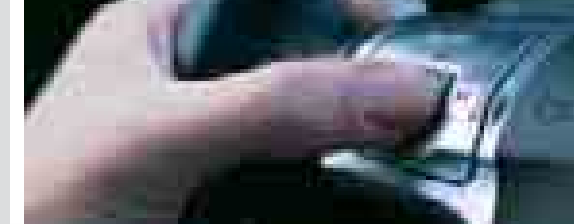


The Ford Mondeo

Don't think. Feel



Control at the touch of a button – minimising distractions from the road ahead.



Every model comes with the Human Machine Interface (HMI) system, featuring either a Standard, Enhanced or Ford Convers+ cluster display, enabling you to monitor and control key functions with your thumbs.

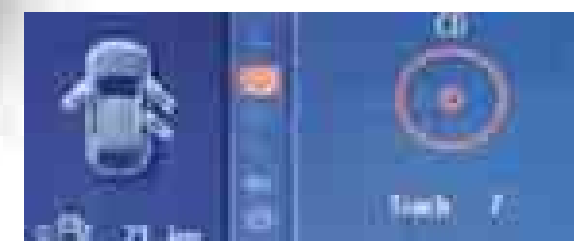
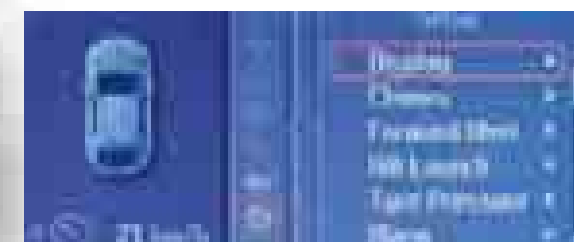
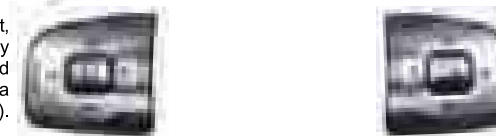
Intuitive



Mobile navigation

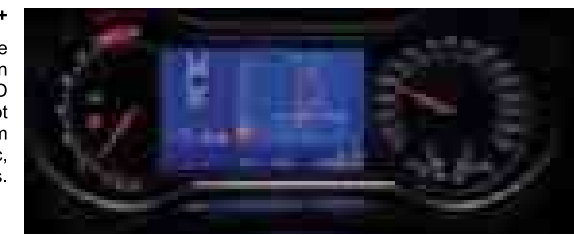
Turn your Bluetooth®-enabled mobile 'smart' phone (mobile phone not included) into a navigation unit. Simply insert the navigation chip, enter your journey details and the phone will transmit route guidance via the car's audio system and cluster display. Please see your Ford Dealer or www.ford.co.uk for phone compatibility. (Option)

The left toggle switch controls volume, seek, change radio station preset, as well as mode. The right toggle switch controls the cluster display (vehicle settings, trip computer). For cars equipped with Ford Convers+, the right toggle switch allows scrolling through multimedia lists (phone (mobile phone not included), radio, and CD).



Ford Convers+

This advanced instrumentation provides an exceptional interface between you and your car, with high-quality, easy-to-read graphics on a 5" colour TFT screen. It allows you to control the in-car radio, CD player and your Bluetooth® enabled mobile phone (mobile phone not included). Ford Convers+ standard on Titanium, Titanium X, Titanium X Sport, and also available as part of optional Comfort Pack on Zetec, ECOnetic, and Ghia models.



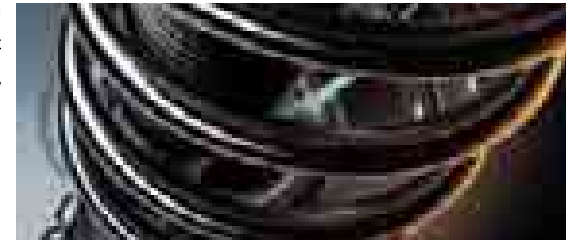
Electronic Stability Programme (ESP) is designed to detect and automatically compensate for loss of control under extreme conditions, using brakes and throttle to keep your vehicle firmly on track.

The Ford Mondeo is a true driver's car. The steering, suspension and braking systems, though hidden from view, come into their own when called upon to perform on challenging roads.

Involving

Suspension

The Ford Mondeo's independent MacPherson front suspension system and independent 'Control Blade' multi-link rear suspension system deliver sporty driving dynamics with a refined ride.



Interactive Vehicle Dynamics Control (IVDC) with Continuously Controlled Damping (CCD)

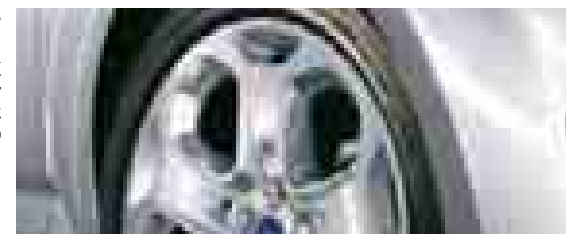
IVDC delivers notable improvements to handling, stability and braking performance. Each damper is adjusted five times per second to guarantee the best possible occupant comfort and road contact. You can also switch between suspension modes – sport, normal and comfort – as the mood takes you. (Option; not available on Edge, ECONetic, Titanium with 2.0 115PS TDCi, Titanium X Sport, Zetec 1.6 petrol, or any Mondeo models fitted with optional sport suspension or optional self-levelling rear suspension)

1. Independent front suspension
2. Rear independent Control Blade multi-link suspension
3. Hill Launch Assist (Option, included with Adaptive Cruise Control or Interactive Vehicle Dynamics Control)
4. Lowered sports suspension (Option; standard on ECONetic, Titanium with 2.0 115PS TDCi and Titanium X Sport)
5. Cruise control



18" Y-spoke alloy wheels with low-profile tyres

(Standard on Titanium X Sport; option on Ghia, Titanium (excluding 2.0 115PS TDCi), Titanium X and part of Sport Pack with 18" Y-spoke alloy wheels (Zetec, Ghia, and Titanium) and Style Pack (Estate versions of Zetec, Ghia and Titanium))



The Ford Keyless start system includes a facia-mounted 'Ford Power' starter button adds an extra touch of convenience and style. (Standard on Titanium X and Titanium X Sport; option as part of keyless entry and start system pack on Titanium and as part of Ghia X Pack on Ghia)



The advanced Duratec petrol and Duratorq diesel engines powering Ford Mondeo are at the heart of its dynamic excellence. And the wide range of engines to choose from means that you can find the perfect blend of power and economy to meet your needs.

Intelligent

Ford Easy Fuel

The Ford Easy Fuel capless refuelling system features a mis-fuelling inhibitor that can tell the difference between the fuel pump nozzles used for petrol and diesel, only accepting the correct type of nozzle for your car.



Transmissions

Durashift 5-speed manual
Durashift 6-speed manual
Durashift 6-speed automatic with 'Sportsmode'

Petrol engines

1.6 Duratec (110 PS)
1.6 Duratec (125 PS)
2.0 Duratec (145 PS)
2.0 Duratec Flexifuel (FFV) (145PS)
2.3 Duratec (161 PS)
2.5 Duratec (220 PS)

Diesel engines

1.8 Duratorq TDCi (100 PS)
1.8 Duratorq TDCi (125 PS)
2.0 Duratorq TDCi (115 PS)
2.0 Duratorq TDCi (140 PS)
2.2 Duratorq TDCi (175 PS)

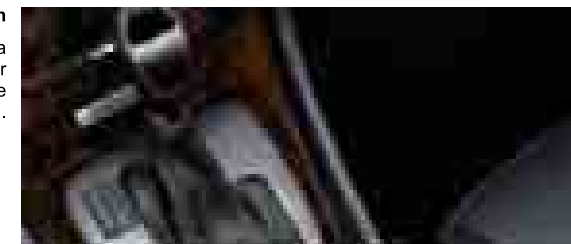


Powerful and refined engines

With an impressive 400 Nm of torque at its disposal, the 2.2 Duratorq TDCi diesel represents the ultimate in effortless performance. Meanwhile, the powerful yet smooth-revving 220 PS 2.5 Duratec 5-cylinder turbocharged petrol engine demonstrates its flexibility by developing 320 Nm of torque at just 1500 rpm.

6-speed Durashift automatic transmission

This advanced automatic transmission includes a 'Sportsmode', and also allows you to adjust to your individual driving style by changing to manual mode for more involved driving.



Durashift 6-speed manual

Engineered for the extra torque of our more powerful diesel and petrol engines, the Durashift 6-speed provides added in-gear flexibility, fuel economy and refinement.



Adaptive Cruise Control (ACC) with Forward Alert (FA) automatically adjusts your speed if the car in front is travelling at a slower speed. Forward Alert offers an audible and visual warning when there's a risk of colliding with the vehicle ahead – plus it includes Brake Support, which helps to reduce stopping distances.
(Option; not available on Edge and ECONetic)



Why do some cars feel safer than others? Is it the number of airbags? The way it feels planted to the road? Or is it the reassuring 'thunk' when you close the doors? The Ford Intelligent Protection System, together with active and passive safety technologies, helps deliver that feeling.

Safe

Halogen Adaptive Front lighting System (AFS) with static cornering lamps

Swivels the low beam headlights by up to 15 degrees to aim in the direction you are heading, with static cornering lights providing extra light for sharp bends and junctions. (Standard on Titanium X; option on other models excluding Titanium X Sport where Bi-Xenons are standard)



Safety without compromise

Ford Mondeo's holistic approach to safety is reflected by a 5-star adult occupant protection rating, the maximum rating awarded by Euro NCAP, along with a 4-star rating for child occupant protection.

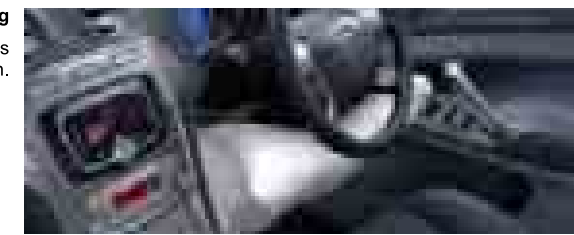
1. Driver's and front passenger's airbags*
2. Driver's and front passenger's side airbags
3. Side curtain airbags
4. Driver's inflatable knee airbag
5. Horizontal stroking steering column and retractable pedals
6. Side impact door beams
7. ISOFIX fixing points for child seats on rear outer seats
8. Rigid steel safety cage
9. Hazard lights activated under heavy braking
10. Engine compartment cross-beam and energy-absorbing subframe
11. Electronically-controlled anti-lock brakes (ABS) with electronic brake-force distribution (EBD)
12. Electronic Stability Programme (ESP) with Traction Assist and Emergency Brake Assist (EBA)
13. Front and rear disc brakes
14. Adaptive Cruise Control (ACC) with Forward Alert (FA) (Option, not available on Edge and ECONetic)



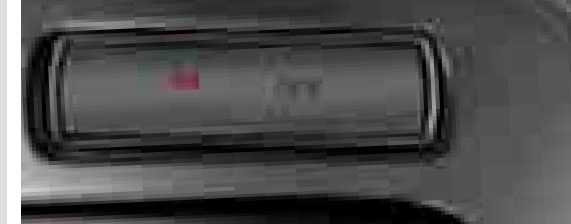
*Note: A child seat should never be placed on the front passenger seat when the Ford vehicle is equipped with an operational front passenger's airbag. The safest place for children is properly restrained on the rear seats.

Driver's knee airbag

The driver's knee airbag helps prevent injuries through contact with the steering column.



Human Machine Interface (HMI), air conditioning, Quickclear heated windscreen, stereo CD/radio, cruise control, trip computer, power-operated front windows and mirrors – all standard with Edge.



Generous levels of equipment and a stylish and spacious package start with Edge.

Edge



Model shown above is finished in Sea Grey metallic paint. (Option)

Top right: Electronic Stability Programme (ESP) is designed to detect and automatically compensate for loss of control under extreme conditions, using brakes and throttle to keep your car firmly on track. (Standard)

Features

- 16" 7-spoke wheel covers
- Advanced Bluetooth® Hands-Free and Voice Control System
- Air conditioning
- Electronic Stability Programme (ESP) with Traction Assist and Emergency Brake Assist (EBA)
- Seven airbags, including driver's knee airbag
- Thatcham approved alarm
- Ford Easy Fuel capless refuelling system
- Human Machine Interface (HMI) with Standard cluster display
- Cruise control
- Stereo CD/radio
- Quickclear heated front windscreen
- Power-operated front windows and heated door mirrors
- Headlight courtesy delay
- Remote control central locking
- Leather steering wheel
- Body colour bumpers

Human Machine Interface (HMI) with Standard cluster display

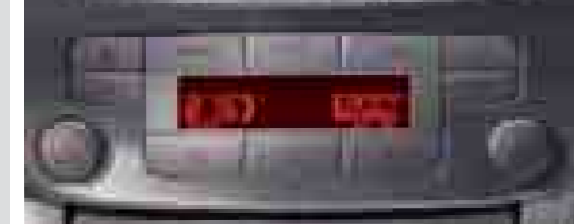
The right-hand steering wheel-mounted toggle switch lets you move easily through the menus that are displayed on the cluster display, providing simple, logical control of the vehicle settings and trip computer.



Dual-zone Electronic Automatic Temperature Control (DEATC), driver's seat power height adjust and leather gearshift knob reflect higher levels of refinement on Zetec.



Zetec benefits from extra interior and exterior styling cues and additional comfort and convenience features.



Zetec



Model shown above is finished in Sea Grey metallic paint. (Option)

Top right: Air conditioning with Dual-zone Electronic Automatic Temperature Control (DEATC).

Opposite: Model shown features Sony CD with DAB audio system (Option)

Additional to Edge

- 16" Y-spoke lightweight alloy wheels
- Front fog lights
- Air conditioning with Dual-zone Electronic Automatic Temperature Control (DEATC)
- Power-operated rear windows
- Driver's seat power height adjust with manual lumbar adjustment
- Leather gearshift knob
- Body colour door handles
- Front and rear carpet mats
- Brushed-finish front-door-opening scuff plates
- Chrome lower grille surround
- Illumination of driver and passenger sunvisor mirrors

Front fog lights for increased visibility in poor driving conditions.



With ultra-low emissions and reduced running costs, ECONetic is better for the environment. And your pocket.



ECONetic's generous standard specification proves that caring for the environment doesn't have to compromise your driving pleasure.

ECONetic



Model shown above is finished in Ink Blue metallic paint. (Option)

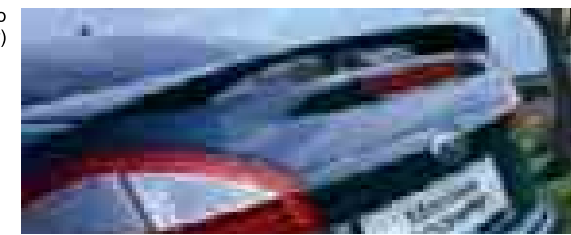
Top right: Ford ECONetic: low-emission diesel cars that are affordable, stylish and rewarding to drive.

Opposite: Model shown features Sony CD with DAB audio system (Option)

Additional to Edge

- 1.8 Duratorq TDCi (125 PS) or 2.0 Duratorq TDCi (115 PS)
- Low rolling resistance tyres
- Front grille air deflectors
- Body colour aerodynamic rear spoiler (5-door)
- Upshift gear change indicator
- Air-conditioning with Dual-zone Electronic Temperature Control (DEATC)
- Front fog lights
- Power-operated rear windows
- Driver's seat power height adjust with manual lumbar adjustment
- Lowered sports suspension

Rear spoiler channels air over car more efficiently to reduce drag. (Standard on ECONetic 5-door)



Leather and wood detailing, and premium features such as Sony 6CD with DAB audio system and automatic headlights are standard features on Ghia.

Ghia offers traditional luxury together with new technologies to further assist and pamper the driver.

Ghia



Ghia is distinguished from the exterior by body colour door handles with a chrome strip.

Model shown above is a Ghia finished in Panther Black metallic paint. (Option)

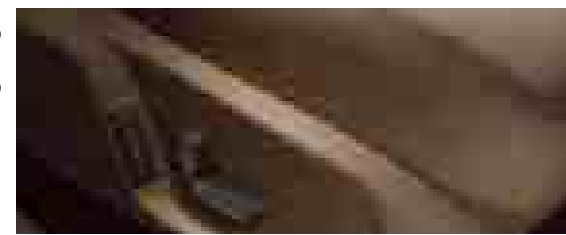
Model shown opposite includes variable heated seats. (Option)

Additional to Zetec

- 17" 7x3 spoke alloy wheels
- Automatic headlights and rain-sensing wipers
- Rear seat air conditioning vents
- Sony 6CD with DAB audio system
- Power-operated, heated and folding door mirrors with puddle lights
- Front passenger's seat manual height adjust with manual lumbar adjustment
- Auto-dimming rear-view mirror
- Wood-effect interior trim details
- Leather-wrapped handbrake
- Front interior ambient lighting
- Front and rear map reading lights
- Front footwell lights
- Chrome upper grille and self-colour lower grille
- Chrome finish on upper doorline
- Body colour door handles with chrome strip

Premium quality Napoli leather seat trim. (Option on Ghia)

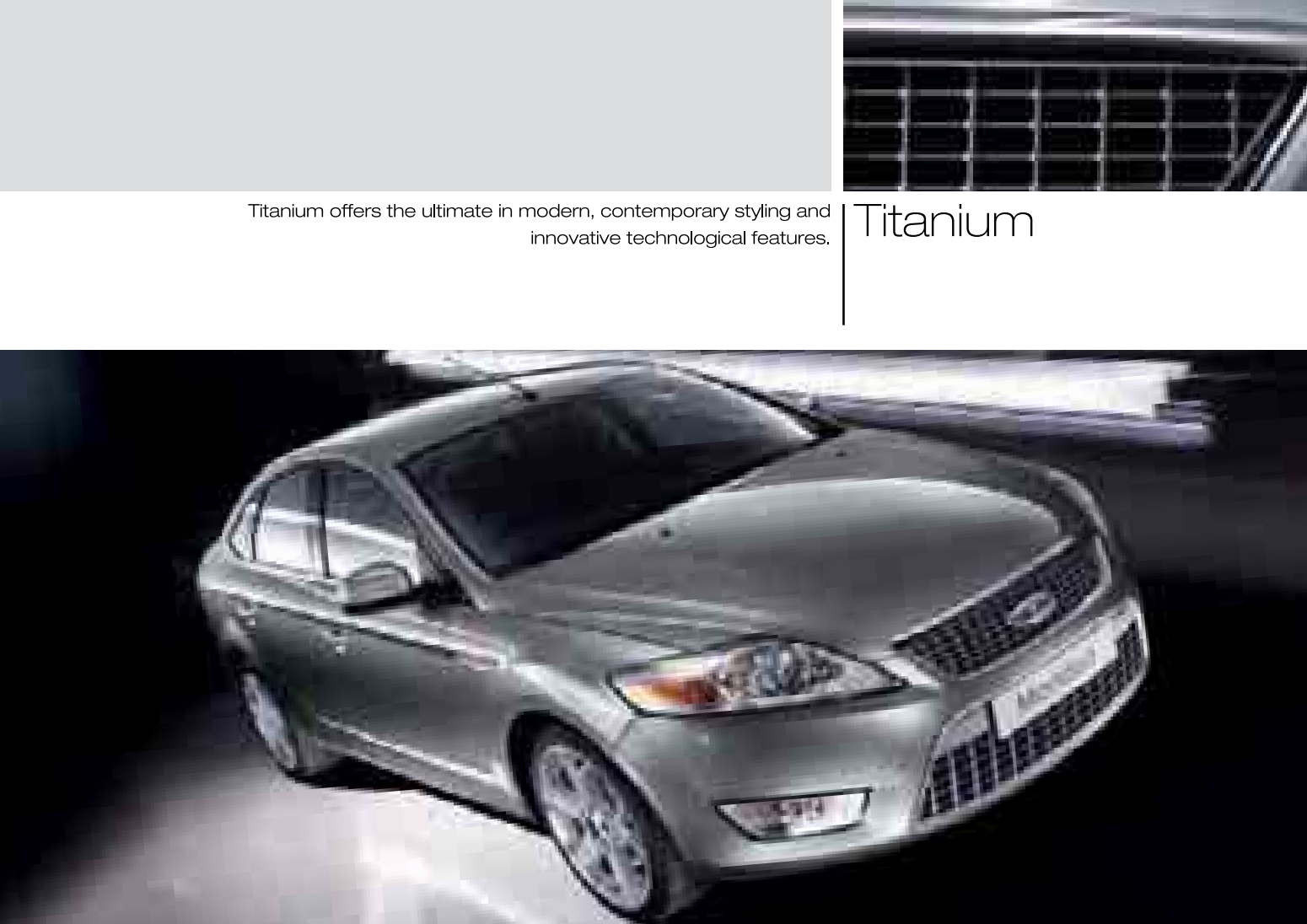
Driver's seat with 8-way power height adjustment. (Part of optional Seat Pack)



Titanium features the high-level Ford Convers+ cluster with colour screen.

Titanium offers the ultimate in modern, contemporary styling and innovative technological features.

Titanium



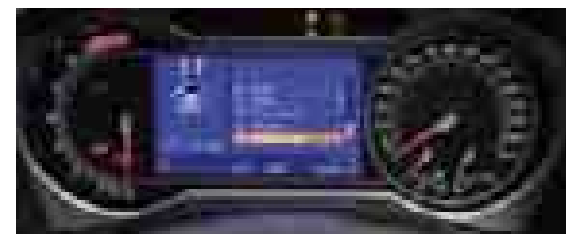
Model shown above is a Titanium finished in Thunder metallic paint. (Option)

Now available with 2.0 115PS TDCi engine* (Co2 139g/km) fitted with added ECONetic features.

* Please refer to specification pages for further details.

Additional to Zetec

- 17" Y-spoke alloy wheels (excluding 2.0 115PS TDCi)
- Ford Convers+ instrument cluster with colour screen
- Rear seat air conditioning vents
- Sony 6CD with DAB audio system
- Power-operated, heated and folding door mirrors with puddle lights
- Front passenger's seat manual lumbar adjustment
- Sports-style front seats
- Auto-dimming rear-view mirror
- Brushed-chrome interior trim
- Leather-wrapped handbrake
- Front interior ambient lighting
- Front and rear map reading lights
- Front footwell lights
- Blue glass
- Silver painted upper and lower grilles
- Chrome finish on upper doorline
- Automatic headlights and rain-sensing wipers



Sports-style seats, trimmed in Alcantara and leather, place you comfortably in control.

Titanium X



Model shown above is a Titanium X finished in Chill metallic paint. (Option)

Model shown above is fitted with roof rails with a silver-painted finish. (Option)

Model shown above is fitted with 18" Y-Spoke alloy wheels. (Option)

Additional to Titanium

- Halogen Adaptive Front lighting System (AFS) with static cornering lights
- Park Assist - Front and rear sensors
- 'Ford Power' starter button
- Alcantara/leather seat trim
- Variable heated front seats
- Rear seat centre armrest with cup holders and stowage

The halogen Adaptive Front lighting System (AFS), with swivelling low beam and static cornering lights on Titanium X, is typical of its advanced technical specification.



With cockpit details like Carbotex appliqué and red stitching on the Alcantara/leather trimmed sports seats, the unique sports interior styling of Titanium X Sport boldly signals its performance credentials.

From every perspective, the Titanium X Sport is the epitome of modern sports style.

Titanium X Sport



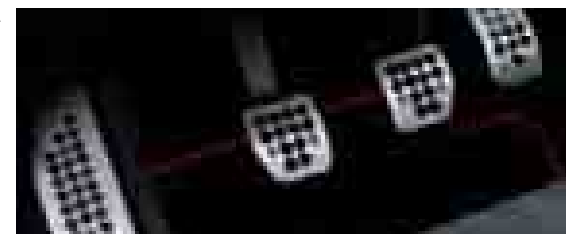
Model shown above is a Titanium X Sport finished in Panther Black metallic paint. (Option)

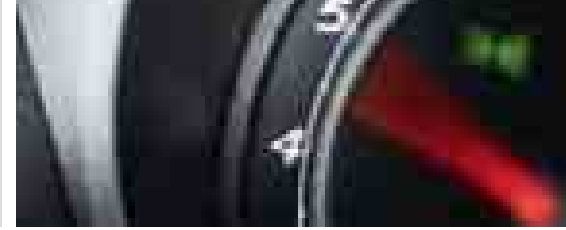
Model shown opposite includes DVD navigation system with 7" touchscreen and USB/MP3/iPod® connectivity port. (Option)

Additional to Titanium X

- 18" Y-spoke alloy wheels, unique sports bodystyling, including front bumper skirt, rear bumper skirt with integrated diffuser, and side skirts, finished in contrasting colour
- Rear spoiler (excluding 5-door 2.0 TDCi 140PS automatic)
- Sport suspension
- Alcantara/leather seat trim with red detail stitching
- Straight twin exhausts with finishers (excluding 2.0 TDCi engines)
- Bi-xenons with static cornering lights
- Unique sports interior styling, including red detail stitching to steering wheel, door panel inserts, gearshift gaiter, and carpet mats
- Centre stack finished in high-gloss piano black
- Carbotex (carbon fibre-effect) trim spears
- Pedal set and footrest with aluminium covers

Pedal set and footrest with aluminium covers add a further sporty dimension.





Edge

Features

- Electrically-operated and heated door mirrors
 - Advanced Bluetooth® Hands-Free and Voice Control System
 - Air conditioning
 - Human Machine Interface (HMI) with Standard cluster display
 - Cruise control
 - Ford Easy Fuel capless refuelling system
 - Electronic Stability Programme (ESP) with Traction Assist and Emergency Brake Assist (EBA)
 - Thatcham approved alarm
 - Leather-trimmed steering wheel
-
- Bodystyles: 4-door, 5-door, Estate
-
- Engines
 - Petrol
 - 1.6 Duratec
 - 2.0 Duratec
 - 2.0 Duratec Flexifuel
 - 2.3 Duratec
 - Diesel
 - 1.8 Duratorq TDCi (125 PS)
 - 2.0 Duratorq TDCi (140PS)
 - 2.2 Duratorq (175PS)
-
- Diesel
 - 1.8 Duratorq TDCi (100 PS)
 - 1.8 Duratorq TDCi (125PS)
 - 2.0 Duratorq TDCi (140 PS)

Zetec

Additional to Edge

- 16" Y-spoke lightweight alloy wheels
- Front fog lights
- Electrically-operated rear windows
- Air conditioning with Dual-zone Electronic Automatic Temperature Control (DEATC)
- Driver's seat electric height adjust with manual lumbar adjustment
- Leather gearshift knob

- Bodystyles: 4-door, 5-door, Estate

- Engines
- Petrol
 - 1.6 Duratec
 - 2.0 Duratec
 - 2.0 Duratec Flexifuel
 - 2.3 Duratec

- Diesel
 - 1.8 Duratorq TDCi (125 PS)
 - 2.0 Duratorq TDCi (140PS)
 - 2.2 Duratorq (175PS)

ECONetic

Additional to Edge

- Low rolling resistance tyres
- Front grille air deflectors
- Body colour aerodynamic rear spoiler (5-door)
- Upshift gear change indicator
- Air conditioning with Dual-zone Electronic Automatic Temperature Control (DEATC)
- Sport suspension

- Bodystyles: 5-door, Estate

- Engines
- Diesel
 - 1.8 Duratorq TDCi (125 PS)
 - 2.0 Duratorq TDCi (115 PS)

Ghia

Additional to Zetec

- 17" 7x3-spoke alloy wheels
- Sony 6CD with DAB audio system
- Electrically-operated and heated door mirrors with puddle lights
- Wood-effect interior trim details
- Front interior ambient lighting
- Automatic headlights and rain-sensing wipers

- Bodystyles: 4-door, 5-door, Estate

- Engines
- Petrol
 - 2.0 Duratec
 - 2.3 Duratec
 - 2.5 Duratec

- Diesel
 - 1.8 Duratorq TDCi (125 PS)
 - 2.0 Duratorq TDCi (140 PS)
 - 2.2 Duratorq TDCi (175PS)

Titanium

Additional to Zetec

- 17" Y-spoke alloy wheels (excluding 2.0 115PS TDCi)
- Sony 6CD with DAB audio system
- Blue glass
- Electrically-operated and heated door mirrors with puddle lights
- Ford Convers+ cluster with colour screen
- Front interior ambient lighting
- Automatic headlights and rain-sensing wipers
- Silver painted upper and lower grilles, lower grille with chrome surround

- Bodystyles: 4-door, 5-door, Estate

- Engines
- Petrol
 - 2.0 Duratec
 - 2.0 Duratec Flexifuel
 - 2.3 Duratec
 - 2.5 Duratec

- Diesel
 - 1.8 Duratorq TDCi (125 PS)
 - 2.0 Duratorq TDCi (115PS) ECO
 - 2.0 Duratorq TDCi (140 PS)
 - 2.2 Duratorq TDCi (175PS)

Titanium X

Additional to Titanium

- Halogen Adaptive Front Lighting System (AFS) with static cornering lights
- Park Assist - Front and rear sensors
- Alcantara/leather seat trim
- Variable heated front seats
- 'Ford Power' starter button
- Rear seat centre armrest with cup holders and stowage

- Bodystyles: 4-door, 5-door, Estate

- Engines
- Petrol
 - 2.0 Duratec
 - 2.3 Duratec
 - 2.5 Duratec

- Diesel
 - 1.8 Duratorq TDCi (125 PS)
 - 2.0 Duratorq TDCi (140 PS)
 - 2.2 Duratorq TDCi (175 PS)

Titanium X Sport

Additional to Titanium X

- 18" Y-spoke alloy wheels, unique sports bodystyling, finished in contrasting colour
- Rear Spoiler (excluding 5-door 2.0 TDCi 140PS automatic)
- Sport suspension
- Alcantara/leather seat trim with red detail stitching
- Bi-xenons with static cornering lights
- Unique sports interior styling
- Carbotex (carbon fibre-effect) trim spears
- Pedal set and footrest with aluminium covers

- Bodystyles: 5-door, Estate

- Engines
- Petrol
 - 2.5 Duratec

- Diesel
 - 2.0 Duratorq TDCi (140PS)
 - 2.2 Duratorq TDCi (175 PS)

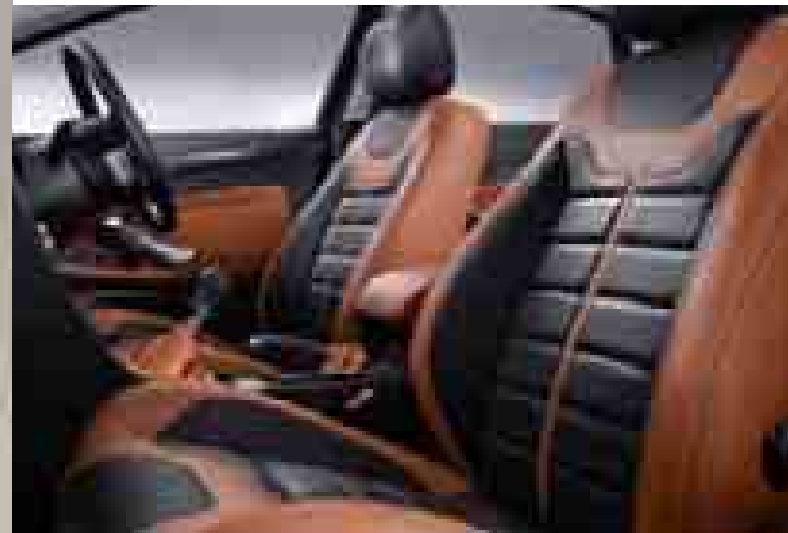
Ford Mondeo Individual Interior Styling Pack in Light Beige with Ebony piping

Fabulous nappa and grained leather trim combines the highest levels of dynamic style and luxury. (Option, available on Ghia and Titanium)



The Mondeo Individual Interior Styling Packs turn the inside of your Mondeo into a very special place. Stunning design is matched with craftsmanship, high-grade materials and meticulous attention to detail. Premium quality leather of different textures with special-effect stitching, and even the floor mats are carefully chosen to put you in the lap of luxury. If driving is a pleasure, Ford Individual makes it a delight.

Mondeo Individual Interior styling



Ford Mondeo Individual Interior Styling Pack

- Unique premium quality full-leather seats offering different leather textures, depending on design version, and special stitching effect. Coordinating leather door panel inserts, armrests and gearshift gaiter. Four versions available, each featuring the Ford 'Individual' script embossed into the front seatbacks and the rear-seat centre armrest
- Deep pile premium quality velour floor mats with colour-coordinated surround
- Pedal set with aluminium covers, including footrest cover
- Unique polished stainless steel scuff plates with 'Individual' script
- 8-way power adjustment for the driver's and front passenger's seats, including manual lumbar adjust
- Memory function for the driver's seat and power foldable exterior mirrors
- Heated front seats with variable control

Note Available for Ford Mondeo Ghia and/or Titanium only (depending on Pack version) – not available with variable climate control front seats and integrated child seats. Please see separate Ford Mondeo Individual brochure or ask your Ford Dealer for further information.



Mondeo Individual Exterior Styling Pack: eye-catching exterior contours and details in contrasting colour create a powerful, dynamic presence that sets your Mondeo apart from anything else on the road. (Standard on Titanium X Sport; also available as an accessory)

Scuff plates with 'Individual' script

Elegant polished stainless steel scuff plates welcome you aboard, while helping to protect the paintwork. (Part of Ford Mondeo Individual Interior Styling Pack)

Mondeo Individual Exterior styling

A single glance at the Ford Mondeo is all it takes to connect with its 'Ford kinetic Design' – that sense of dynamic forward movement, even when it's standing still. Now you can make it even more exciting to look at with the Ford Mondeo Individual Exterior Styling Pack.



Ford Mondeo Individual Exterior Styling Pack*

- Body colour front bumper skirt
- Body colour rear bumper skirt with integrated diffuser (Silver or Anthracite effect^o)
- Lower front grille surround in contrasting colour (Silver or Anthracite effect^o)
- Unique honeycomb design upper and lower front grilles
- Unique body colour side skirts
- Unique front fog light kit (fog light bezel with Silver or Anthracite effect^o)

Rear spoiler

For an even greater degree of exclusivity and expressive style, a body colour rear spoiler is also available for 5-door and estate. (Option and Accessory. Not part of the Mondeo Individual Exterior Styling Pack, shown above. Not available on 5-door with automatic transmission)

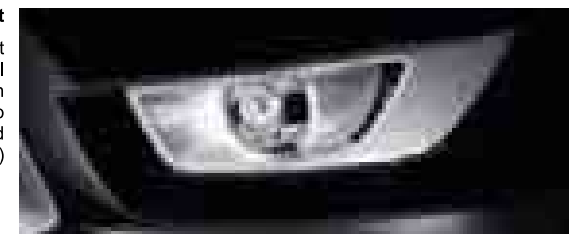
Ford Individual alloy wheels

Specially-developed 18" Ford Individual 5-spoke alloy wheels in Mystique Silver provide the perfect finishing touch to your Ford Mondeo. The unique Mystique Silver paint gives them a visual depth, as depending on the sunlight, the iridescent colour varies between light and dark grey tones for a stunning individual appearance. (Option)



Front fog light kit

Carefully sculpted into the front bumper design with a special contrast colour bezel for high performance style. (Part of Mondeo Individual Exterior Styling Pack and available as a single Accessory)



*The colour contrasts with the body colour of the vehicle: Frozen White, Moondust Silver and Hypnotic Silver have an Anthracite effect; all other available exterior colours have a Silver effect.
*Not available with:
• 4-door bodystyle
• 205/55 R16 tyres
• 1.6-litre Duratec petrol engine or 1.8-litre Lynx engine
• Ford Flexifuel vehicles (FFV)
• Fixed tow bar (Accessory), but is available with detachable tow bar (Option and Accessory)
• Mudflaps
Offered on 2.5-litre Duratec petrol and 2.2-litre Duratorq TDCi diesel engine with dual straight exhaust.



The human ear can distinguish between up to 330,000 different tones – how will you entertain yours?

Bluetooth® with Voice Control
Enables you to make hands-free calls, while the Voice Control system technology lets you control your Bluetooth®-compatible mobile phone (mobile phone not included), audio, optional DVD navigation and Dual-zone Electronic Automatic Temperature Control (DEATC) (excluding Edge) with the sound of your voice.

Ford Mondeo offers you a wide range of optional premium quality audio, navigation and communication systems, including the latest Bluetooth® wireless technology. Clever features for a more enjoyable drive.

Entertaining

Human Machine Interface (HMI) with Enhanced cluster display

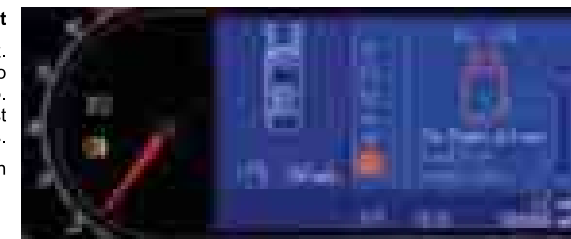
The HMI system with Enhanced cluster display is available on Edge, Zetec, ECONetic, and Ghia if the car is specified at extra cost with ACC with FA, IVDC, Tyre Pressure Monitoring System, or a navigation system. The Enhanced instrument cluster puts you in control of optional features such as Adaptive Cruise Control (ACC) with Forward Alert (FA) and Tyre Pressure Monitoring System. In addition, it provides the turn-by-turn icons of the optional navigation system.



USB/MP3/iPod® connectivity port

Built-in connectivity for your iPod® MP3 player, or USB stick. Lets you listen to, and operate, your player via the car's audio system (Option). A dedicated connector cable (Part no. 1529487) is available as an accessory for operating most iPods® and MP3 players.

iPod is a trademark of Apple Corporation



Stereo CD/radio – Model 6000CD

This stereo radio/CD player features 'Keycode' anti-theft coding, 24 programmable stations, eight speakers and remote control via the left steering wheel toggle switch. (Standard on Edge, Zetec, and ECONetic)



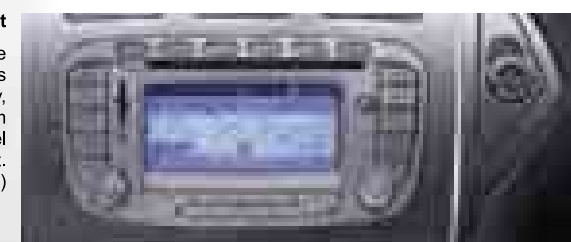
Sony audio systems

Add a new dimension to your in-car music with a Sony audio system. Featuring Programme Type (PTY) and Digital Sound Processing, the Sony CD with DAB has MP3 compatibility, 40 programmable stations, and eight premium speakers for enhanced sound quality. (Option on Edge, Zetec, and ECONetic). With its in-dash CD autochanger, the Sony 6CD with DAB audio system (shown) offers hours of unbroken entertainment (Standard on Ghia, Titanium, Titanium X, and Titanium X Sport)



Advanced navigation system and USB port

This system features a 5" full-colour map display to provide turn-by-turn instructions to your destination. Includes integrated stereo radio, CD player with MP3 compatibility, Traffic Message Channel (TMC) enabled, eight premium speakers and remote audio control via the steering wheel toggle switch. Includes USB/MP3/iPod® connectivity port. (Option)



DVD navigation system with touchscreen and USB port

This state-of-the-art system uses a 7" colour touchscreen, which allows simple navigation within the menus or control of the Dual-zone Electronic Automatic Temperature Control (DEATC), CD, radio and Bluetooth® enabled mobile phone (mobile phone not included) functionality. Includes Traffic Message Channel (TMC) and USB/MP3/iPod® connectivity port. (Option)



Ford Individual MultiMedia DVD system

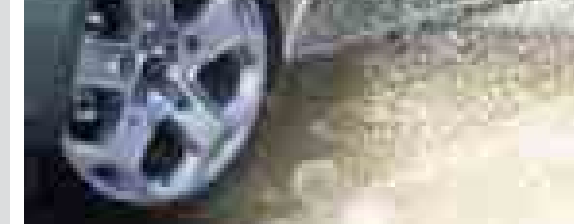
Ford Mondeo's in-car entertainment features a built-in DVD player with two independently-operated LCD 7" screens and two wireless headphones. So even your more demanding passengers can enjoy their own personal space with movies and computer games. (Option)



Note The Bluetooth® word mark and logos are owned by the Bluetooth SIG, Inc. and any use of such marks by Ford Motor Company Limited and its associated companies is under licence. Other trademarks and trade names are those of their respective owners.

Note It is an offence for drivers to use a hand-held mobile phone or similar device while driving.

18" Y-spoke alloy wheel. (Standard on Titanium X Sport; also available as part of Sport Pack and Style Pack (Estate only) or as an Accessory)



A range of distinctive alloy wheels designed to be the perfect complement to the dynamic styling of your Ford Mondeo.

Wheels



1. 16" 7-spoke wheel cover (Standard on Edge and ECONetic)
2. 16" Y-spoke lightweight alloy wheel (Standard on Zetec and Titanium (with 2.0 115PS TDCi); Option on Edge and ECONetic; also available as an Accessory)
3. 16" 5x2-spoke alloy wheel (Available as an Accessory)
4. 16" 7x2-spoke alloy wheel (Available as an Accessory)
5. 16" 24-spoke alloy wheel (Available as an Accessory)
6. 17" Y-spoke alloy wheel (Standard on Titanium (excluding 2.0 115PS TDCi), Titanium X; Option as part of Zetec Sport Pack; also available as an Accessory)
7. 17" 7x3-spoke alloy wheel (Standard on Ghia; also available as an Accessory)
8. 17" 15-spoke alloy wheel (Available as an Accessory)
9. 18" Y-spoke alloy wheel (Standard on Titanium X Sport; Option as part of Sport Pack and Style Pack (Estate only) also available as an Accessory)
10. 18" Ford Individual 5-spoke Mystique Silver-painted alloy wheel (Available as an Accessory)

Standard = Standard on your vehicle.
 Option = Can be ordered only together with your new vehicle.
 Accessory = Available from your Ford Dealer.

Tyre pressure monitoring system

Allows you to monitor your tyres individual pressures from the comfort of the drivers seat, by the simple use of the toggle switches located on the steering wheel. You will also be alerted to the loss of tyre pressure. (Option)



Stylish body colour rear spoiler for the Estate.
(Standard on Titanium X Sport; single option and also option as part of any Sport Pack; also available as an accessory)

Thule XTENDER ski/snowboard carrier
Innovative, fully-lockable ski carrier suitable for up to six pairs of skis or four snowboards. Comfortable slide-out function extends outside the roof area for easy access to your ski equipment. (Accessory)



Choose from a wide range of purpose-designed transportation and stowage options and accessories to further enhance your Mondeo's exceptional versatility and load-carrying capacity.

Intelligent stowage

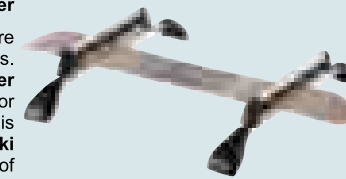
Estate dog guard

Available in two different versions for the Estate: one to fit behind the front row of seats (Option only) and the other behind the rear seats* (Option and Accessory). Meets European ECE-17 safety requirements.



Roof base carrier

Lockable base carriers are available for all models. (Accessory). **Thule Extender** holds up to six pairs of skis or four snowboards. This innovative and accessible **ski carrier** extends outside the roof area to make loading and unloading easier (Accessory).



Waeco coolbox

High-performance 35-litre capacity box cools down to 30°C below the ambient temperature or down to a minimum of 1°C. Integrated 230V AC connector. (Accessory)

Britax Römer child seat

Various child seats available for all ages, also with ISOFIX. (Accessory)

Thule roof box

Designed to carry a wide variety of loads and protect them from weather conditions and theft. (Accessory, available in a wide range of sizes).

Carpet floor mats

Premium velour front and rear mats, tailored to suit your chosen interior. Driver's mat is fixed to prevent slippage. (Accessory)

Mudflaps

Help to protect your bodywork from unsightly stone chips and road spray. (Accessory. Not suitable for vehicles with full bodystyling kit)

Eibach suspension lowering kit

Enhances driving performance and handling as well as giving a more sporty appearance. Lowers the car by approximately 30 mm. (Accessory)



Sliding load floor

Allows far easier loading and unloading of heavy or awkward items. Can carry loads of up to 200kg inside car. Maximum load on rear edge if extended is 120kg. (Option on Estate)

Rear bumper protection foil

Safeguard your investment with this transparent protection foil. (Accessory)



Ford accessories are designed to help you get the most out of your lifestyle.

Thule ProRide bike carrier

Smart, lightweight aluminium, lockable bike carrier with self adjusting holder for bike frames up to 80mm in diameter. (Accessory)



Get the most out of your Ford Mondeo with a wide range of high-quality products designed specifically for your new car. More Ford Boutique items can be found in a separate catalogue or at your local Ford Dealer.

Ford Boutique

Ford Boutique sunglasses

Enjoy the sunshine with these contemporary sunglasses. (Accessory)



Ford Boutique leather wallet

Black leather wallet with Ford embossed logo. (Accessory)

1. Mont Blanc 'Baracuda' bicycle carrier

Specially designed to carry modern bikes with frames up to 80 mm in diameter. Also features integral locks to keep bikes safe and secure. (Accessory)



2. Ford Boutique Mountain Bike

For off-road and fun excursions, choose the Ford Boutique Mountain Bike, which features an 18-speed Shimano shift and a 26" frame. (Accessory)

3. Load protection net

Keeps your items secure in the luggage compartment while you're on the move. Meets European ECE-17 safety requirement. (Option and Accessory on Estate only)

4. Luggage compartment protection

Anti-slip mat (4/5-door) or boot space liner (Estate) moulded to fit perfectly into the vehicle. Protects your luggage compartment from dirt and wet. (Accessory)

5. Tow bar

Available as fixed (Accessory) or detachable (Option and Accessory) version. To be used in combination with an electrical connector kit. (Accessory)



Ford Boutique watch

Classic multi-dial bracelet watch. (Accessory)

ClimAir® wind deflector

Reduces turbulence and noise, allowing you a more enjoyable drive with the windows down, even when it's raining. (Accessory, available for front and rear windows)



We are all beginning to understand the impact that mobility is having on climate change. While we can't change things overnight, we are working very hard to find solutions.

Our range of finance, insurance, service and assistance options is designed with just one thing in mind – making life easy for you.

Making a difference

On Ford Mondeo, Ford S-MAX and Ford Galaxy, our optional Flexifuel engine, fuelled by E85, is achieving emission reductions of around 30% to 80%** compared to conventional petrol engines. E85 is a mixture of 85% plant-derived ethanol and 15% petrol, but these models can run on any mixture of the two – even 100% petrol.

New low emission diesel EConetic derivatives are now available. Ford Fiesta EConetic delivers more than 76.3 mpg, emitting just 98 g/km of CO₂. Ford Focus EConetic delivers more than 74 mpg, emitting just 99 g/km of CO₂ and Ford Mondeo EConetic delivers more than 54 mpg, emitting 139 g/km of CO₂.

Protecting the future

Using our Product Sustainability Index, a design for sustainability management tool, we are addressing the environmental, social and economic impacts of our vehicles from the earliest stages of their development*.

We are working on a wide range of vehicle technologies from biofuels to hybrids and clean diesels, and in the long term to hydrogen fuel-cell technology with the potential for near zero CO₂ emissions.

Improving our manufacturing facilities

Elsewhere, we are working to minimise the impact of our facilities on the environment, for example by pioneering on-site generation of electricity from sun and wind.

Breathe easier

The allergy-tested interiors of Ford Fusion, Ford Focus, Ford C-MAX, Ford Kuga, Ford Mondeo, Ford S-MAX and Ford Galaxy models were the first worldwide to receive the approval of the independent German TÜV organisation.

Recycling for good

In the interests of sustainability, many of our components contain recycled and renewable content. All Ford vehicles are at least 85% recyclable and 95% recoverable in accordance with ISO 22628. We offer free take-back for qualifying vehicles at the end of their lives. All our take-back points are fully licensed and must also meet additional Ford quality standards for the professional receipt, treatment and recovery of end-of-life vehicles.

This brochure has been produced on paper based on fibres from sustainable forestry, using a 100% chlorine-free (TCF) bleaching process.

*For more about this topic, see www.ford.com/go/sustainability
 **Dependent on feedstock used and production process. (Source: EUCAR CONCAWE study.)
 Ford supports the sustainable production of biofuels.

Ford Credit

When it comes to financing your vehicle, your Ford Dealer can remove the need for lengthy phone calls, endless online surfing and form-filling. They can help you complete an application and will get a decision, usually within 15 minutes.

So what can your Ford Dealer provide? **Ford Options** offers increased flexibility if you want to change your car more often; **Ford Acquire** is ideal for private and business users who want a more straightforward financing plan; **Ford Business Partner Contract Hire*** provides an affordable, convenient and flexible way to finance your business vehicle; and **Ford Insure**** is our comprehensive motor insurance product, designed specifically for Ford drivers.

Finance subject to status. Guarantees/indemnities may be required. Freepost Ford Credit.

*Business Partner Contract Hire is provided by Lex Vehicle Leasing Limited, trading as Ford Business Partner, Heathside Park, Heathside Park Road, Stockport SK3 0RB.

**Ford Insure is underwritten and administered by Royal & Sun Alliance Insurance plc (No. 93792). Registered in England and Wales at St Mark's Court, Chart Way, Horsham, West Sussex, RH12 1XL. Authorised and regulated by the Financial Services Authority. For your protection, telephone calls will be recorded and may be monitored.

Services

Ford Protect

Your new Ford is protected by a 3-year/60,000-mile Ford Protect Classic Plan Warranty, and comes with Ford Assistance roadside cover throughout the UK and Europe for 1 year. You can also upgrade to a Ford Protect Premium Plan, giving you the option of scheduled servicing and extended Ford Assistance.

Ford Service

Like any vehicle, your new Ford needs servicing regularly to keep it in the best condition and to maintain its value. The Ford authorised repairer network is independently quality checked to ensure the highest standards of workmanship are maintained. Ford has the largest repairer network in the UK, and uses Ford-trained technicians, Ford-specific tools and the latest computerised diagnostic equipment specifically for your Ford.

Ford Accident Repair Centres

Should your Ford require accident repair, an approved Ford Accident Repair Centre is the best place to return your vehicle to its pre-accident condition. Repairers displaying the Ford Accident Repair Centre sign meet the rigorous customer service, technical and quality standards demanded by Ford. Ford trained technicians, the latest repair equipment and the use of original parts mean that the future safety and value of your vehicle are assured.

Contacts

Ford Customer Relationship Centre

In the unlikely event that your Ford Dealer can't help you or if you need to speak to us directly, call 0845 841 1111 at local rates.

Ford Rental – local service nationwide

Car and van rental from our latest model range. Contact your local Ford Dealer for more information.

Ford Mobility

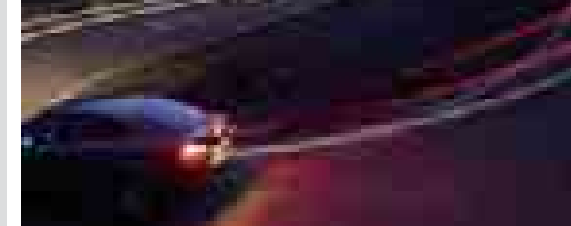
Our MAGIC care centre provides free information on all motoring and mobility issues, including special offers for HRDLA and Motability recipients. Call free on 0800 240 241.



Programme for the Endorsement of Forest Certification schemes

This brochure is printed on PEFC certified paper promoting sustainable forest management.

Specification



Exterior dimensions

	4-door	5-door	Estate
Exterior (mm)			
Overall length	4844	4778	4830
Overall width without mirrors	1886	1886	1886
Overall width with mirrors folded (where specified with power folding mirrors)	1937	1937	1937
Overall width with mirrors	2078	2078	2078
Overall height without roof rails	1500	1500	1512
Overall height with roof rails			1548
Wheelbase	2850	2850	2850
Ground clearance, loaded vehicle	110	110	112

Interior dimensions

	4-door	5-door	Estate
Front (mm)			
Headroom	996	996	996
Maximum leg room	1126	1126	1126
Shoulder room	1448	1448	1448
Rear (mm)			
Headroom	976	965	1004
Leg room (nominal 95% driver position)	950	950	950
Shoulder room	1421	1421	1421
Luggage area (mm)			
Maximum cargo height			849
Maximum width between wheel arches	1135	1130	1141
Length at floor to 2nd row seats		1171	1183
Length at floor to 1st row seats		1886	1920
Lift-over height (unladen)	700	700	579
Stowable luggage (litres)[‡]			
5-seat mode (with mini spare)	535	528	542
2-seat mode (with mini spare)		1448	1733

[‡] Measured in accordance with ISO 3832. Dimensions may vary dependent on the model and equipment fitted.

Engine data

	Engine technical features	Maximum power ^o	Maximum torque ^o
1.6 Duratec Ti-VCT Petrol (110 PS) 1596 cc	4 cylinders in line; DOHC; 16 valves; twin independent valve cam timing; alloy cylinder head and block; electronic multipoint fuel injection	81 kW (110 PS) at 6200 min ⁻¹ (rpm)	160 Nm at 4100 min ⁻¹ (rpm)
1.6 Duratec Ti-VCT Petrol (125 PS) 1596 cc	4 cylinders in line; DOHC; 16 valves; twin independent valve cam timing; alloy cylinder head and block; electronic multipoint fuel injection	92 kW (125 PS) at 6300 min ⁻¹ (rpm)	160 Nm at 4100 min ⁻¹ (rpm)
2.0 Duratec Petrol (145 PS) 1999 cc	4 cylinders in line; DOHC; 16 valves; alloy cylinder head and block; electronic multipoint fuel injection; dual-mass flywheel	107 kW (145 PS) at 6000 min ⁻¹ (rpm)	185 Nm at 4500 min ⁻¹ (rpm)
2.0 Duratec FFV (145 PS) 1999 cc	4 cylinders in line; DOHC; 16 valves; variable intake system; alloy cylinder head and block; electronic multipoint fuel injection	107 kW (145 PS) at 6000 min ⁻¹ (rpm)	190 Nm at 4500 min ⁻¹ (rpm)

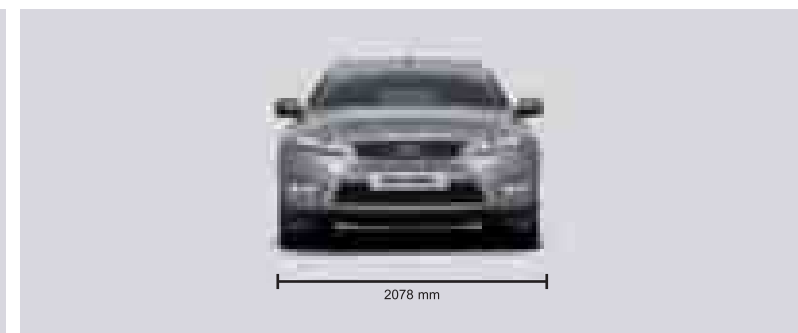
Engine data

	Engine technical features	Maximum power ^o	Maximum torque ^o
2.3 Duratec Petrol (161 PS) 2261 cc	4 cylinders in line; DOHC; 16 valves; intake variable cam timing; alloy cylinder head and block; electronic multipoint fuel injection; dual-mass flywheel	118 kW (161 PS) at 6500 min ⁻¹ (rpm)	208 Nm at 4200 min ⁻¹ (rpm)
2.5 Duratec Petrol (220 PS) 2521 cc	5 cylinders in line; DOHC; 20 valves; variable valve timing (VVT); turbo charged; alloy cylinder head and block; electronic multipoint fuel injection; dual-mass flywheel	162 kW (220 PS) at 5000 min ⁻¹ (rpm)	320 Nm at 1500-4800 min ⁻¹ (rpm)
1.8 Duratorq TDCi Diesel (100 PS) 1753 cc	4 cylinders in line; SOHC; 8 valves; cast iron head and block; direct injection with high pressure, common-rail, multipoint fuel injection system; electrically actuated variable geometry turbocharger with intercooler and transient torque overboost function; dual-mass flywheel	74 kW (100 PS) at 3850 min ⁻¹ (rpm)	280/295* Nm at 1800 min ⁻¹ (rpm)
1.8 Duratorq TDCi Diesel (125 PS) 1753 cc	4 cylinders in line; SOHC; 8 valves; cast iron head and block; direct injection with high pressure, common-rail, multipoint fuel injection system; electrically actuated variable geometry turbocharger with intercooler and transient torque overboost function; dual-mass flywheel	92 kW (125 PS) at 3700 min ⁻¹ (rpm)	320/340* Nm at 1800 min ⁻¹ (rpm)
2.0 Duratorq TDCi Diesel (115 PS) 1997 cc	4 cylinders in line; DOHC; 16 valves; alloy cylinder head; direct injection with high-pressure, common-rail, multipoint fuel injection; variable geometry turbocharger with intercooler and transient torque overboost function; diesel particulate filter; electronic throttle; dual-mass flywheel	85 kW (115 PS) at 4000 min ⁻¹ (rpm)	300/320* Nm at 1750-2300 min ⁻¹ (rpm)
2.0 Duratorq TDCi Diesel (140 PS) 1997 cc	4 cylinders in line; DOHC; 16 valves; alloy cylinder head; direct injection with high-pressure, common-rail, multipoint fuel injection; variable geometry turbocharger with intercooler and transient torque overboost function; diesel particulate filter; electronic throttle; dual-mass flywheel	103 kW (140 PS) at 4000 min ⁻¹ (rpm)	320/340* Nm at 1750-2240 min ⁻¹ (rpm)
2.2 Duratorq TDCi Diesel (175 PS) 2179 cc	4 cylinders in line; DOHC; 16 valves; alloy cylinder head; direct injection with high-pressure, common-rail, multipoint fuel injection; variable geometry turbocharger with intercooler and transient torque overboost function; diesel particulate filter; electronic throttle; dual-mass flywheel	129 kW (175 PS) at 3500 min ⁻¹ (rpm)	400/420* Nm at 1750-2750 min ⁻¹ (rpm)

Note: All Mondeo engines are Stage IV emissions level. ^oTested in accordance with ISO 1585. *With transient overboost.

Fuel, performance and emissions

	CO ₂ emissions (g/km) ^o	Fuel consumption in L/100 km (mpg)			Performance ^o		
		Urban	Extra Urban	Combined	Max. speed (mph)	0-60 mph (secs)	30-60 mph (secs)*
4-door							
2.0 Duratec (145 PS)	189	11.2 (25.2)	6.0 (47.1)	7.9 (35.8)	130	9.7	12.4
2.5 Duratec (220 PS), Durashift 6-speed manual	222	13.6 (20.8)	6.8 (41.5)	9.3 (30.4)	152	7.3	7.7
2.0 Duratorq TDCi (140 PS), Durashift 6-speed automatic	187	9.7 (29.1)	5.5 (51.4)	7.1 (39.8)	127	10.0	n/a
2.0 Duratorq TDCi (140 PS), Durashift 6-speed manual	154	7.6 (37.2)	4.9 (57.6)	5.9 (47.9)	130	9.3	8.5
2.2 Duratorq TDCi (175 PS), Durashift 6-speed manual	165	8.4 (33.6)	4.9 (57.6)	6.2 (45.6)	139	8.4	6.9
5-door							
1.6 Duratec (110 PS)	170	10.0 (28.2)	5.6 (50.4)	7.2 (39.2)	118	12.4	14.3
1.6 Duratec (125 PS)	170	10.0 (28.2)	5.6 (50.4)	7.2 (39.2)	121	11.9	14.3
2.0 Duratec (145 PS)	189	11.2 (25.2)	6.0 (47.1)	7.9 (35.8)	130	9.7	12.4
2.0 Duratec FFV ¹⁾ (145 PS)	189	11.2 (25.2)	6.0 (47.1)	7.9 (35.8)	130	9.7	12.4
2.3 Duratec (161 PS), Durashift 6-speed automatic	223	13.8 (20.5)	6.7 (42.2)	9.3 (30.4)	129	10.2	n/a
2.5 Duratec (220 PS), Durashift 6-speed manual	222	13.6 (20.8)	6.8 (41.5)	9.3 (30.4)	152	7.3	7.7
1.8 Duratorq TDCi (100 PS)	149	7.3 (38.7)	4.6 (61.4)	5.6 (50.4)	115	11.9	12.4
1.8 Duratorq TDCi (125 PS)	149	7.3 (38.7)	4.6 (61.4)	5.6 (50.4)	124	10.4	11.3
1.8 Duratorq TDCi (125 PS) ECONetic	139	6.8 (41.5)	4.4 (64.2)	5.3 (53.3)	126	10.4	12.0
1.8 Duratorq TDCi (125 PS), Durashift 6-speed manual	154	7.5 (37.7)	4.8 (58.9)	5.8 (48.7)	124	10.2	9.5
2.0 Duratorq TDCi (115 PS), ECO, Durashift 6-speed manual	139	6.6 (42.8)	4.4 (64.2)	5.2 (54.3)	121	10.9	10.2



Specification



Fuel, performance and emissions

	CO ₂ emissions (g/km) ⁹⁹	Fuel consumption in L/100 km (mpg)			Performance ⁹		
		Urban	Extra Urban	Combined	Max. speed (mph)	0-60 mph (secs)	30-60 mph (secs)*
2.0 Duratorq TDCi (140 PS), Durashift 6-speed automatic	187	9.7 (29.1)	5.5 (51.4)	7.1 (39.8)	127	10.0	n/a
2.0 Duratorq TDCi (140 PS), Durashift 6-speed manual	154	7.6 (37.2)	4.9 (57.6)	5.9 (47.9)	130	9.3	8.5
2.2 Duratorq TDCi (175 PS), Durashift 6-speed manual	165	8.4 (33.6)	4.9 (57.6)	6.2 (45.6)	139	8.4	6.9
Estate							
1.6 Duratec (110 PS)	170	10.0 (28.2)	5.6 (50.4)	7.2 (39.2)	115	12.6	14.5
1.6 Duratec (125 PS)	170	10.0 (28.2)	5.6 (50.4)	7.2 (39.2)	118	12.3	14.5
2.0 Duratec (145 PS)	189	11.2 (25.2)	6.0 (47.1)	7.9 (35.8)	127	10.0	12.6
2.0 Duratec FFV ¹⁾ (145 PS)	189	11.2 (25.2)	6.0 (47.1)	7.9 (35.8)	127	10.0	12.6
2.3 Duratec (161 PS), Durashift 6-speed automatic	223	13.8 (20.5)	6.7 (42.2)	9.3 (30.4)	126	10.5	n/a
2.5 Duratec (220 PS), Durashift 6-speed manual	222	13.6 (20.8)	6.8 (41.5)	9.3 (30.4)	150	7.5	7.9
1.8 Duratorq TDCi (100 PS)	151	7.4 (38.2)	4.7 (60.1)	5.7 (49.6)	112	12.4	12.6
1.8 Duratorq TDCi (125 PS)	151	7.4 (38.2)	4.7 (60.1)	5.7 (49.6)	121	10.6	11.6
1.8 Duratorq TDCi (125 PS) ECOnetic	142	6.9 (40.9)	4.5 (62.8)	5.4 (52.3)	123	10.6	12.3
1.8 Duratorq TDCi (125 PS), Durashift 6-speed manual	156	7.6 (37.2)	4.9 (57.6)	5.9 (47.9)	121	10.5	9.7
2.0 Duratorq TDCi (115 PS), ECO, Durashift 6-speed manual	139	6.6 (42.8)	4.4 (64.2)	5.2 (54.3)	118	11.1	10.4
2.0 Duratorq TDCi (140 PS), Durashift 6-speed automatic	187	9.7 (29.1)	5.5 (51.4)	7.1 (39.8)	124	10.1	n/a
2.0 Duratorq TDCi (140 PS), Durashift 6-speed manual	154	7.6 (37.2)	4.9 (57.6)	5.9 (47.9)	127	9.6	8.7
2.2 Duratorq TDCi (175 PS), Durashift 6-speed manual	165	8.4 (33.6)	4.9 (57.6)	6.2 (45.6)	135	8.6	7.1

All Mondeo engines are Stage IV emissions level. *In 4th gear. Ford test figures. ⁹⁹All CO₂ emissions figures in g/km and fuel consumption figures in L/100 km are from officially approved tests in accordance with 80/1268/EEC as amended. The CO₂ emissions and fuel consumption test figures shown in the chart do not express or imply any guarantee of the emissions or fuel consumption of a car of the class in question (see back cover). All the figures are based on tests conducted on vehicles with Edge equipment level and with standard wheels and tyres; optional or accessory wheels and tyres may have an effect on the emissions and fuel consumption of a vehicle. **Urban:** An engine started from cold in laboratory conditions operated at varying speeds, maximum 50km/h, average 19km/h over a theoretical distance of 4km. **Extra Urban:** Conducted immediately after the Urban cycle, it consists of half steady speed driving and half varying speed driving, maximum 120km/h over a distance of 7km. **Combined:** This is an average of the two parts of the test, weighted by the distances covered in each part. **Note:** All vehicles are Durashift 5-speed manual except where shown. ¹⁾ The fuel economy data published above relate to use of the petrol 95 RON; use of alcohol fuel or a mixture of petrol and alcohol will lead to other fuel economy data.

Model availability, weights and loads

	Kerbweights (kg)*				Titanium X Sport	Gross Train Mass (vehicle and trailer weight)	Gross Vehicle Mass (Technically permissible maximum laden mass)
	Edge	Zetec	ECOnetic	Ghia			
4-door							
2.0 Duratec (145 PS)	1477	1479		1491	1491	3590	2090
2.5 Duratec (220 PS), Durashift 6-speed manual				1581	1581	3985	2185
2.0 Duratorq TDCi (140 PS), Durashift 6-speed automatic	1578	1580		1592	1592	4190	2190
2.0 Duratorq TDCi (140 PS), Durashift 6-speed manual	1557	1559		1571	1571	3970	2170
2.2 Duratorq TDCi (175 PS), Durashift 6-speed manual		1601		1613	1613	4210	2210

Model availability, weights and loads

	Kerbweights (kg)*					Titanium X Sport	Gross Train Mass (vehicle and trailer weight)	Gross Vehicle Mass (Technically permissible maximum laden mass)
	Edge	Zetec	ECOnetic	Ghia	Titanium			
5-door								
1.6 Duratec (110 PS)	1435						2950	2050
1.6 Duratec (125 PS)	1435	1437					2950	2050
2.0 Duratec (145 PS)	1477	1479		1491	1491	1491	3590	2090
2.0 Duratec FFV (145 PS)		1479			1491		3590	2090
2.3 Duratec (161 PS), Durashift 6-speed automatic		1543		1555	1555	1555	3565	2165
2.5 Duratec (220 PS), Durashift 6-speed manual				1581	1581	1581	3985	2185
1.8 Duratorq TDCi (100 PS)	1505						3750	2150
1.8 Duratorq TDCi (125 PS)	1505	1507					3750	2150
1.8 Duratorq TDCi (125 PS) ECO			1507				2950	2150
1.8 Duratorq TDCi (125 PS), Durashift 6-speed manual	1546	1548		1560	1560	1560	3755	2155
2.0 Duratorq TDCi (115 PS) ECO, Durashift 6-speed manual			1559		1571		3370	2170
2.0 Duratorq TDCi (140 PS), Durashift 6-speed automatic	1578	1580		1592	1592	1592	4190	2190
2.0 Duratorq TDCi (140 PS), Durashift 6-speed manual	1557	1559		1571	1571	1571	3970	2170
2.2 Duratorq TDCi (175 PS), Durashift 6-speed manual		1601		1613	1613	1613	4210	2210
Estate								
1.6 Duratec (110 PS)	1455						2950	2050
1.6 Duratec (125 PS)	1455	1457					2950	2050
2.0 Duratec (145 PS)	1496	1498		1510	1510	1510	3700	2200
2.0 Duratec FFV (145 PS)		1498			1510		3700	2200
2.3 Duratec (161 PS), Durashift 6-speed automatic		1562		1574	1574	1574	3665	2265
2.5 Duratec (220 PS), Durashift 6-speed manual				1600	1600	1600	4095	2295
1.8 Duratorq TDCi (100 PS)	1524						3855	2255
1.8 Duratorq TDCi (125 PS)	1524	1526					3855	2255
1.8 Duratorq TDCi (125 PS) ECO			1526				3055	2255
1.8 Duratorq TDCi (125 PS), Durashift 6-speed manual	1565	1567		1579	1579	1579	3865	2265
2.0 Duratorq TDCi (115 PS) ECO, Durashift 6-speed manual			1578		1590		3475	2275
2.0 Duratorq TDCi (140 PS), Durashift 6-speed automatic	1597	1599		1611	1611	1611	4300	2300
2.0 Duratorq TDCi (140 PS), Durashift 6-speed manual	1576	1578		1590	1590	1590	4075	2275
2.2 Duratorq TDCi (175 PS), Durashift 6-speed manual		1617		1629	1629	1629	4320	2320

All Mondeo engines are Stage IV emissions level. *Represents the minimum kerbweight assuming full fluid levels and 90% fuel levels, including driver at 75 kg; subject to manufacturing tolerances and options etc., fitted. **Key** This table shows the availability of engine and gearbox combinations on Ford Mondeo models and resulting kerbweights. **Note:** All vehicles are 5-speed Durashift manual except where shown. **Towing limits** Figures quoted represent the maximum braked trailer towing mass, with ability for the vehicle to restart on a 12% gradient, either a) max. permissible or b) at Gross Vehicle Mass. The performance and economy of all models will be reduced when used for towing. For further guidance, refer to the National Caravan Council's Towing Code. **Roof rack load** is a maximum of 75 kg. **Nose weight limit** is a maximum of 90kg on all models.



Instrumentation



Multi-function trip computer
Chrome finish on upper doorline



Mechanical features

	Edge	Zetec	ECOnetic	Ghia	Titanium	Titanium X	Titanium X Sport
Brakes & vehicle control							
4 disc brakes, ventilated front and solid rear	●	●	●	●	●	●	●
Anti-lock brakes (ABS) with electronic brake-force distribution (EBD)	●	●	●	●	●	●	●
Electronic Stability Programme (ESP) with Traction Assist and Emergency Brake Assist (EBA)	●	●	●	●	●	●	●
Interactive Vehicle Dynamics Control (IVDC) with Continuously Controlled Damping (CCD) and Hill Launch Assist (HLA). Not available with 2.0 115PS TDCi Duratorq engine, 1.6 Duratec petrol engine, sport suspension or self-levelling rear suspension		○		○	○	○	
Adaptive Cruise Control (ACC) with Forward Alert (FA) and Hill Launch Assist (HLA) (Not available with 2.0 115PS TDCi)		○		○	○	○	○
Emergency (Hazard Warning) Brake Lights	●	●	●	●	●	●	●
Fuel tank							
70 litres	●	●	●	●	●	●	●
Fuel cut-off – Inertia switch (petrol only)	●	●	●	●	●	●	●
Ford Easy Fuel – Capless re-fuelling with mis-fuel inhibitor	●	●	●	●	●	●	●
Steering							
Hydraulic Power-Assisted Steering (HPAS)	●	●	●	●	●	●	●
Suspension and body							
Front – Independent with MacPherson struts, lower control arms with hydro-bushing, isolated subframe, anti-roll bar	●	●	●	●	●	●	●
Rear – Independent Control Blade multi-link system, isolated subframe, anti-roll bar	●	●	●	●	●	●	●
Rear – Self-levelling (Estate only). Not available with sports suspension, IVDC with CCD or 2.0 115PS TDCi	○	○		○	○	○	
Suspension – Lowered sports. Included with any Sport Pack. Not available with self-levelling rear suspension, IVDC with CCD. Standard with 2.0 115PS TDCi	○	○/□	●	○/□	○/□	○/□	●
Turning circle							
Wall to wall 11.80 m	●	●	●	●	●	●	●

● = Standard, ○ = Optional, at extra cost, □ = Part of an option pack, at extra cost

Insurance groups

	1-20 rating/1-50 rating Edge	Zetec	ECOnetic	Ghia	Titanium	Titanium X	Titanium X Sport
1.6 Duratec (110 PS)	7E/12E						
1.6 Duratec (125 PS)	7E/12E	7E/13E					
2.0 Duratec (145 PS)	8E/17E	8E/17E		8E/17E	8E/17E	9E/18E	
2.0 Duratec (145 PS) FFV		8E/17E			8E/17E		
2.3 Duratec (161 PS), Durashift 6-speed automatic		9E/17E		9E/17E	9E/17E	10E/18E	
2.5 Duratec (220 PS), Durashift 6-speed manual				14E/26E	14E/26E	14E/27E	14E/27E
1.8 Duratorq TDCi (100 PS)	7E/17E						
1.8 Duratorq TDCi (125 PS)	7E/17E						
1.8 Duratorq TDCi (125 PS) ECO			8E/17E		8E/17E		
1.8 Duratorq TDCi (125 PS), Durashift 6-speed manual	7E/17E	7E/17E		7E/17E	7E/17E	8E/18E	
2.0 Duratorq TDCi Diesel (115 PS) ECO, Durashift 6-speed manual			7E/17E		8E/17E		
2.0 Duratorq TDCi (140 PS), Durashift 6-speed automatic	8E/18E	8E/19E		9E/19E	9E/19E	9E/20E	10E/20E
2.0 Duratorq TDCi Diesel (140 PS), Durashift 6-speed manual	8E/18E	8E/19E		9E/19E	9E/19E	9E/20E	10E/20E
2.2 Duratorq TDCi Diesel (175 PS), Durashift 6-speed manual		12E/23E		12E/23E	12E/23E	12E/24E	12E/25E

E = Exceeds security requirement and group rating has been reduced. All vehicles are Durashift 5-speed manual except where shown. Insurance ratings are issued by the Association of British Insurers and are shown above on both the (outgoing) 1-20 and (new) 1-50 rating scales.



Luggage compartment anti-slip mat

Accessory. (Shown here with accessory warning triangle and accessory first-aid kit)



Cargo net and load protection net (Estate only)

Accessory. Load protection net also available as an option



Rubber floor mats

Accessory

Safety and security

	Edge	Zetec	ECONetic	Ghia	Titanium	Titanium X	Titanium X Sport
Intelligent Protection System (IPS)	●	●	●	●	●	●	●
Airbags – Driver's and front passenger's*	●	●	●	●	●	●	●
Airbags - Front passenger's deactivation (Dealer-fit)	○	○	○	○	○	○	○
Airbags – Front side impact, driver's and front passenger's	●	●	●	●	●	●	●
Airbags – Front and rear side curtain deployed from the headlining	●	●	●	●	●	●	●
Front seat – Driver's inflatable knee airbag	●	●	●	●	●	●	●
Seat belt reminder system – Driver's and front passenger's seat	●	●	●	●	●	●	●
Seat belts – 3-point with pretensioners and retractors (front seats only)	●	●	●	●	●	●	●
Seat belts – Front, height adjustable mounts	●	●	●	●	●	●	●
Side impact door beams – Front and rear	●	●	●	●	●	●	●
Steering column – Horizontal stroking (collapsible)	●	●	●	●	●	●	●
Immobiliser – Passive Anti-Theft System (PATS)	●	●	●	●	●	●	●
Alarm – Thatcham (Category 1) approved perimeter and volume sensing	●	●	●	●	●	●	●
Locks – Anti-burst, high-security, shielded with child-locks on rear doors	●	●	●	●	●	●	●
Locks – Remote control central, double locking	●	●	●	●	●	●	●
Locks – Keyless start system with 'Ford Power' starter button				□	□	●	●
Locks – Keyless entry and start system with 'Ford Power' starter button (Ford Key-Free System). Included as part of Ghia X Pack on Ghia				□	○	○	○
Keys – Two remote flip keys	●	●	●	●	●		
Keys - Two remote control keys for keyless start						●	●
Keys – Two remote keys for keyless entry and start system. Included as part of Ghia X Pack on Ghia				□	○	○	○
Vehicle Identification Number (VIN) – Visible	●	●	●	●	●	●	●
First aid kit and warning triangle stowage area	●	●	●	●	●	●	●

● = Standard, ○ = Optional, at extra cost, □ = Included with another feature or part of an option pack, at extra cost

*Note: A child seat should never be placed on the front passenger seat when the Ford vehicle is equipped with an operational front passenger's airbag. The safest place for children is properly restrained on the rear seat

Wheel availability

	Edge	Zetec	ECONetic	Ghia	Titanium	Titanium X	Titanium X Sport
6½x16" steel with 7-spoke wheelcovers and 205/55 Rx16 tyres	●		●				
6½x16" Y-spoke lightweight alloy with 205/55 Rx16 tyres	○	●	○		●+		
7½x17" Y-spoke alloy with 235/45 Rx17 tyres. Included as part of Zetec Sport Pack (not available with 1.6 Duratec petrol engines) Optional on Titanium with 2.0 115PS TDCi		□			●/○	●	
7½x17" 7x3-spoke alloy with 235/45 Rx17 tyres				●			
8x18" Y-spoke alloy wheel with 235/40Rx18 tyres. Included as part of Sport Pack and Style Pack (Estate only) on Zetec (not available with 1.6 Duratec petrol engine), Ghia, and Titanium (not available with 2.0 115PS TDCi Duratorq engine)		□		○/□	○/□	○	●
Locking wheel nuts. Only available on Edge and ECONetic if specified with alloy wheels	□	●	□	●	●	●	●
Tyre Pressure Monitoring System. Included as part of Comfort Pack, Safety Pack and Safety Pack with Navigation	○	○/□	○/□	○/□	○/□	○/□	○/□

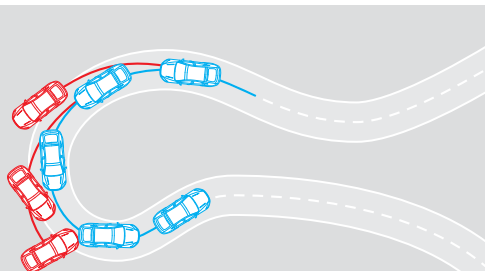
Wheel availability

	Edge	Zetec	ECONetic	Ghia	Titanium	Titanium X	Titanium X Sport
Spare wheels							
16" steel mini-spare wheel with T125/90 R16 tyre. Not fitted on vehicles specified with sliding load floor	●	●	●	●	●	●	●
Instant Mobility System ilo 16" steel mini-spare wheel only available where sliding load floor selected on Estate models	○	○	○	○	○	○	○

● = Standard, ○ = Optional, at extra cost. □ = Included with another feature or part of an option pack, at extra cost. ●+Standard on Titanium with 2.0 115PS TDCi. **Note:** If the spare wheel rim or tyre size differs from the other wheels fitted: **DO NOT** drive in excess of 80 km/h. **DO** drive the least possible distance.

Exterior features

	Edge	Zetec	ECONetic	Ghia	Titanium	Titanium X	Titanium X Sport
Styling							
Bumpers – Body colour	●	●	●	●	●	●	●
Chrome finish on upper doorline				●	●	●	●
Door handles – Black	●						
Door handles – Body colour		●	●		●	●	●
Door handles – Body colour with chrome strip				●			
Paint – Metallic	○	○	○	○	○	○	○
Radiator grille – Self-coloured upper and lower	●	●	●				
Radiator grille – Silver painted upper and lower Specified on Zetec and Ghia if fitted with Adaptive Cruise Control		□		□	●	●	●
Radiator grille – Chrome 3 bar upper and self-coloured lower (not available with ACC)				●			
Radiator grille – Chrome upper grille surround	●	●	●	●	●	●	●
Radiator grille – Chrome lower grille surround		●		●	●	●	●
Spoiler – Rear, tailgate-mounted. Not available on 5 door Automatic and all 4 door models. Standard on Titanium with 2.0 115PS TDCi (5 door), ECONetic (5 door) and Titanium X Sport (excluding 5 door 2.0 TDCi automatic)		○/□	●	○/□	○/□	○/□	●
Full bodystyling kit - Front and rear skirts, unique front fog lights, unique upper and lower radiator grille and rocker panel moulding, straight exhaust finishers with 2.5 Duratec petrol and 2.2 Duratorq TDCi engines. Down facing finishers with 2.0 TDCi engines. (5-door and Estate only)							●
Tailgate/boot lift handle – Body colour	●	●		●	●	●	●
Functional							
Door mirrors – Electrically-operated and heated, black housing, body-coloured scull cap	●	●	●				
Door mirrors – Foldable, electrically-operated and heated, black housing, body-coloured scull cap and puddle lights				●	●	●	●
Heated rear window	●	●	●	●	●	●	●
Heated front windscreen – Quickclear with heated washer jets	●	●	●	●	●	●	●
Glass – Tinted	●	●	●	●			
Glass – Blue					●	●	●
Glass – Privacy (second row and rear windows). Included as part of Sport Appearance Pack on Titanium X and Style Pack (Estate only)	○	○/□	○	○/□	○/□	○/□	○
Park Assist – Front and rear sensors. Included as part of Comfort Pack		○/□	○/□	○/□	○	●	●
Roof rails – Black finish (Estate only)		○					
Roof rails – Silver-painted finish (Estate only). Included as part of Style Pack		○/□	○	○/□	○/□	○	○



Electronic Stability Programme (ESP)

ESP is designed to detect and automatically compensate for loss of control under extreme situations, using the brakes to help restore control.



Anti-lock brakes

The anti-lock braking system (ABS) with Electronic Brake-force Distribution (EBD) prevents the wheels from locking up under braking, thereby reducing the risk of skidding.



Ford Key-Free System

The Ford Key-Free System automatically unlocks the car and allows you to start the engine without using a key; the system operates by you simply carrying the keyfob on your person. (Option on Titanium X and Titanium X Sport; and option as part of Keyless entry and start system with 'Ford Power' starter button on Titanium and option as part of Ghia X Pack on Ghia)



Exterior features

	Edge	Zetec	ECOnetic	Ghia	Titanium	Titanium X	Titanium X Sport
Tow bar – Detachable, including 13 - pin electrical kit	○	○	○	○	○	○	○
Windscreen – Solar Reflect (autowipers and auto headlights included)	○	○	○	○	○	○	○
Wipers – Front, 2-speed with variable interval intermittent wipe with drip wipe	●	●	●	●	●	●	●
Wipers – Front, automatic wipe with rain sensor and variable sensitivity adjustment. Included with optional Solar Reflect Windscreen	□	□	□	●	●	●	●
Wipers – Tailgate, intermittent with electric wash and auto reverse wipe (5-door and Estate only)	●	●	●	●	●	●	●
Lights							
Halogen, polycarbonate stone impact resistant headlights, side lights, rear fog lights, reversing lights, high-mounted rear brake light	●	●	●	●	●		
Halogen Adaptive Front Lighting System (AFS) with swivelling low beam headlights and static cornering lights		○	○	○	○	●	
Bi-Xenon Front Lighting System with fixed xenon headlights, static cornering lights, automatic headlight levelling and washer jets		○	○	○	○	○	●
Auto headlights. Included with optional Solar Reflect Windscreen	□	□	□	●	●	●	●
Fog lights – Front		●	●	●	●	●	●
Headlight courtesy delay		●	●	●	●	●	●
Headlight levelling – Manual		●	●	●	●	●	●
Orange fender side indicators		●	●	●	●	●	●

● = Standard, ○ = Optional, at extra cost. □ = Included with another feature or part of an option pack, at extra cost

Audio and communication systems

	Edge	Zetec	ECOnetic	Ghia	Titanium	Titanium X	Titanium X Sport
Stereo CD/radio – Model 6000CD RDS EON, 'Keycode' anti-theft coding, 8 speakers	●	●	●				
Sony CD audio system with DAB – Stereo radio/CD/MP3, CD RDS EON, PTY, MP3 capability, 'Keycode' anti-theft coding, DSP, 8 premium speakers	○	○	○				
Sony 6CD audio system with DAB – Stereo radio/6 disc in-dash CD autochanger, 6CD RDS EON, PTY, MP3 capability, 'Keycode' anti-theft coding, DSP, 8 premium speakers				●	●	●	●
Advanced Navigation System with Stereo Radio/CD and USB/MP3/iPod® connectivity port – 5" colour display, 8 speakers, and navigation data (UK & Major Roads Europe) on SD card, and TMC. Replaces standard specification audio system when ordered	○	○	○				
Advanced Navigation System with Stereo Radio/CD and USB/MP3/iPod® connectivity port – 5" colour display, 8 speakers, external 6-disc CD autochanger (not available to order with 4 door), and navigation data (UK & Major Roads Europe) on SD card, and TMC. Replaces standard specification audio system when ordered				○	○	○	○
DVD touchscreen navigation system with Stereo Radio/CD and USB/MP3/iPod® connectivity port – 7" touchscreen, colour map display with UK & Western Europe navigation data on DVD, destination input via voice, MP3 capability, TMC, and 8 premium speakers. Includes air conditioning with DEATC on Edge. Replaces standard specification audio system when ordered	○	○	○	○	○	○	○
DVD touchscreen navigation system with Stereo Radio/CD and USB/MP3/iPod® connectivity port – 7" touchscreen, colour map display with UK & Western Europe navigation data on DVD, external 6-disc CD autochanger (not available to order with 4 door), TMC, and 8 premium speakers. . Replaces standard specification audio system when ordered				○	○	○	○
Mobile Navigation - comprises memory card, wireless GPS module and connectivity box. Bluetooth®-enabled mobile smart-phone (phone not included) transmits route guidance via the car's audio system. USB/MP3/iPod® connectivity port also included. Please see your Ford Dealer for phone compatability. On Edge, Zetec, and ECOnetic optional Sony audio system must also be specified	○	○	○	○	○	○	○

Audio and communication systems

	Edge	Zetec	ECOnetic	Ghia	Titanium	Titanium X	Titanium X Sport
Multimedia DVD system – DVD player, 2 LCD screens integrated into front head restraints, infra-red remote control, 2 infra-red headphones		○	○	○	○	○	○
Advanced Bluetooth® Hands-Free and Voice Control System. Mobile phone not included	●	●	●	●	●	●	●
Portable Music Connection Socket	●	●	●	●	●	●	●
USB/MP3/iPod® connectivity port – Only available in combination with Sony audio or standard with Navigation systems	○	○	○	○	○	○	○

● = Standard, ○ = Optional, at extra cost iPod is a trademark of Apple Corporation
The Bluetooth® word mark and logos are owned by the Bluetooth SIG, Inc. and any use of such marks by Ford Motor Company is under licence. Other trademarks and trade names are those of their respective owners.

Interior features

	Edge	Zetec	ECOnetic	Ghia	Titanium	Titanium X	Titanium X Sport
Comfort and convenience							
Accessory socket	●	●	●	●	●	●	●
Air conditioning – CFC-free	●						
Air conditioning – CFC-free, with Dual-zone Electronic Automatic Temperature Control (DEATC). Only available on Edge if specified with DVD navigation system	□	●	●	●	●	●	●
Air conditioning – Second row air vents				●	●	●	●
Ashtray – Front	●	●	●	●	●	●	●
Ashtray – Rear	●	●	●	●	●	●	●
Centre console – Storage box, hinged armrest, 2 cup holders	●	●	●	●	●	●	●
Clock – Digital in instrument cluster and audio display	●	●	●	●	●	●	●
Footrest – Driver's	●	●	●	●	●	●	●
Glovebox – Illuminated	●	●	●	●	●	●	●
Grab handle – Front passenger's, damped	●	●	●	●	●	●	●
Grab handles – Two rear folding, damped with coat hook	●	●	●	●	●	●	●
Mirror – Dipping rear-view, manual	●	●	●				
Mirror – Auto-dimming rear-view				●	●	●	●
Pollen filter	●	●	●	●	●	●	●
Storage – Facia, driver's lower	●	●	●	●	●	●	●
Storage – Short overhead console with sunglass storage	●	●	●	●	●	●	●
Sunblinds – Integrated pull-up on rear windows. Includes power rear windows on Edge	○	○	○	○	○	○	○
Sunroof – Electrically-operated tilt/slide screened glass with 'bounce-back' sensor, linked to global opening/closing. Includes sunvisors with illuminated mirrors on Edge	○	○	○	○	○	○	○
Sunvisors – Two with mirrors	●						
Sunvisors – Two, with illuminated mirrors. Only available on Edge if specified with sunroof	□	●	●	●	●	●	●
Windows – Front, electrically-operated with one-shot lowering/closing, 'bounce-back' sensor and global opening/closing	●	●	●	●	●	●	●
Windows – Rear, electrically-operated, 'bounce-back' sensor with global opening/closing. Only available on Edge if specified with rear sunblinds	□	●	●	●	●	●	●



Rear spoiler

Standard on Titanium X Sport (excluding 5 door 2.0 TDCi automatic), Titanium 2.0 115PS 5 door and ECOnetic 5 door. Available as a single option and as part of any optional Sport Pack (not available on certain models). Also available as an Accessory.



Mont Blanc 'Baracuda' bicycle carrier

Accessory.



Power-operated heated/foldable door mirrors with puddle lights

Standard on Ghia, Titanium, Titanium X and Titanium X Sport.

Interior features

	Edge	Zetec	ECONetic	Ghia	Titanium	Titanium X	Titanium X Sport
Seats and seat belts							
Front seat – Driver's 2-way manual height adjust with manual lumbar adjustment and height-adjustable head restraint	●						
Front seat – Driver's 2-way power height adjust with manual lumbar adjustment and height-adjustable head restraint		●	●				
Front seat – Driver's 2-way power height adjust with manual lumbar adjustment and 4-way head restraint				●	●	●	●
Seat Pack – Driver and front passenger's 8-way power height adjust with manual lumbar adjustment, electrically operated/heated/folding door mirrors, memory function for driver's seat. Includes 4-way head restraint. Seat Pack not available with cloth seats (partial leather seat trim, leather seat trim, or alcantara/leather seat trim must be specified at extra cost on Zetec, ECONetic, Ghia, and Titanium). Included as part of Individual Interior Styling Pack on Ghia and Titanium		○	○	○/□	○/□	○	○
Front seat – Passenger's with height-adjustable head restraint	●	●	●				
Front seat – Passenger's with manual lumbar adjustment and 4-way head restraint					●		
Front seat – Passenger's 2-way manual height adjust with manual lumbar adjustment and 4-way head restraint				●		●	●
Front seats – Driver's and passenger's manual seat recliner	●	●	●	●	●	●	●
Front seats – Sports style					●	●	●
Front seats – Variable heated. Included as part of Individual Interior Styling Pack on Ghia and Titanium		○	○	○/□	○/□	●	●
Front seats – Variable climate control (hot and cold and ventilated)				○	○	●	●
Rear seat – 60:40 split bench cushion and seat back	●	●	●	●	●	●	●
Rear seats – Three head restraints, height-adjustable	●	●	●	●	●	●	●
Rear seats – Heated, with variable control				○	○	○	○
Rear seats – Centre armrest	●	●	●	●	●		
Rear seats – Centre armrest with stowage compartment/cup holders						●	●
Seats – Partial leather-trimmed, with 4-way head restraint and lumbar support		○	○				
Seats – Alcantara/leather-trimmed					○	●	
Seats – Alcantara/leather-trimmed with black backing and red stitching							●
Seats – Leather-trimmed				○			
Seats – 'ISOFIX' Attachments (rear outboard seats only)	●	●	●	●	●	●	●
Seats – Two integrated child seats (3-10 years) on rear outboard seats	○	○	○	○	○	○	○
Storage pockets – Front seat backs (passenger's side only on Edge)	●	●	●	●	●	●	●
Seat belts – Front, inertia reel, with belt retractor, pre-tensioners and height-adjustable mounts. Rear, three inertia reel, lap and diagonal	●	●	●	●	●	●	●
Carpet and trim							
Carpet – Cut pile	●	●	●	●	●	●	●
Carpet – Non-slip front and rear mats		●		●	●	●	●
Front door trim spears – Metal		●	●				
Front door trim spears – Mocca (dark wood-effect)				●			
Front door trim spears – Brushed chrome					●	●	
Front door trim spears – Carbo-Tex Sport							●
Front and rear doors – Release levers in satin chrome, door pulls with satin chrome inserts, door stowage bins	●	●	●	●	●	●	●
Chrome interior door pull handles, armrests and door bins	●	●	●	●	●	●	●

Interior features

	Edge	Zetec	ECONetic	Ghia	Titanium	Titanium X	Titanium X Sport
Silver metallic-finish instrument cluster rings	●	●	●	●	●	●	●
Gear knob – Black insert with chrome surround	●	●	●	●	●	●	●
Gear knob – Leather		●	●	●	●	●	●
Gear shift gaiter – Ebony with red contrast stitching							●
Gear knob – Wood (automatic transmission only). Only available if specified with wood/leather steering wheel				□			
Handbrake – Leather-wrapped				●	●	●	●
Instrument panel passenger side Deco strip – Dark	●						
Instrument panel passenger side Deco strip – Metal		●	●				
Instrument panel passenger side Deco strip – Mocca (dark wood-effect)				●			
Instrument panel passenger side Deco strip – Brushed chrome					●	●	
Instrument panel passenger side Deco strip – Carbo-Tex Sport							●
Pedals – Alloy finish. Included as part of Sport Appearance Pack						○/□	●
Scuff plates – Brushed stainless steel, front doors only		●		●	●	●	●
Instruments and controls							
Steering wheel audio toggle switches	●	●	●	●	●	●	●
Standard instrument cluster	●	●	●	●			
Enhanced instrument cluster. Only available on Ghia or if specified with ACC with FA (not available on Edge or ECONetic), IVDC (not available on Edge or ECONetic), Tyre Pressure Monitoring System (excluding when ordered as part of Comfort Pack), or navigation systems	□	□	□	●			
Ford Convers+ premium instrument cluster with colour display. Included as part of Comfort Pack.		□	□	□	●	●	●
Instruments – Speedometer, odometer, tripmeter, tachometer, fuel gauge, water temperature gauge	●	●	●	●	●	●	●
Trip computer including average fuel consumption, average speed, outside air temperature, trip reset, distance to empty (fuel)	●	●	●	●	●	●	●
Warning indicators for low fuel, oil pressure, direction indicators, driver's and front passengers's seat belts, glow plug indicator (diesel only), main beam, front and rear fog lights, ignition/alternator, brake system/handbrake on, airbags, 0° and 4° Celcius frost warning, maximum engine speed, message indicator, audible warning for 'lights on', key in ignition, door ajar, reverse gear (only if fitted with 'Park Assist'), front driver and passenger seat reminder	●	●	●	●	●	●	●
Ignition key – Steering column-mounted	●	●	●	●	●		
Ignition key – Keyless with instrument panel mounted "Ford Power" starter button. Included as part of keyless entry and keyless start system pack on Titanium and as part of the Ghia X Pack on Ghia.				□	□	●	●
Illuminated heater controls – 4-speed fan, temperature and direction control, two dedicated side window demists and rear compartment floor ducts	●	●	●	●	●	●	●
Illumination – Cluster and clock on unlocking	●	●	●	●	●	●	●
Illumination – Odometer delay after 'ignition off'	●	●	●	●	●	●	●
Master lighting control – Facia-mounted with headlight levelling control	●	●	●	●	●	●	●
Control stalks – Column-mounted for indicators, main beam, dip and flash, wash/wipe functions	●	●	●	●	●	●	●
Cruise control	●	●	●	●	●	●	●
Adaptive Cruise Control (ACC) with Forward Alert (FA) and Hill Launch Assist (HLA) (Not available with 2.0 115PS TDCi)		○		○	○	○	○



60:40 split rear seatback and cushion



Electrically-operated sunroof

Electrically-operated tilt/slide screened glass with 'bounce-back' sensor, linked to global opening/closing. (Option; only available on Edge if specified with rear sunblinds)



Rear seat centre armrest with stowage compartment/cup holders

Standard on Titanium X and Titanium X Sport



Interior features

	Edge	Zetec	ECONetic	Ghia	Titanium	Titanium X	Titanium X Sport
Steering column – Reach and rake adjustable	●	●	●	●	●	●	●
Steering column – Locking (electric if specified with keyless ignition; otherwise manual)	●	●	●	●	●	●	●
Steering wheel – Leather-trimmed with metal-finished spokes, incorporating horn function	●	●	●	●	●	●	●
Steering wheel – Real wood and leather steering wheel. Includes real wood gear shift on automatic transmissions				○			
Steering wheel – Leather rim with metal-finished spokes and red contrast stitching, incorporating horn function							●
Lighting							
Courtesy lights – Front light, header mounted	●	●	●	●	●	●	●
Courtesy lights – Front reading/map lights				●	●	●	●
Courtesy lights – Front ambient LED lighting				●	●	●	●
Courtesy lights – Front footwell lights				●	●	●	●
Courtesy lights – 2nd row light	●	●	●	●	●	●	●
Courtesy lights – 2nd row reading/map lights				●	●	●	●
Courtesy lights – 3rd row (Estate only)	●	●	●	●	●	●	●
Courtesy light – Delay and theatre dimming	●	●	●	●	●	●	●
Illuminated entry system – Courtesy and puddle lights activated on unlocking (puddle lights on Ghia, Titanium, Titanium X and Titanium X Sport only)	●	●	●	●	●	●	●
Light – Luggage compartment (4 and 5-door only)	●	●	●	●	●	●	●
Luggage compartment							
Carpet – Floor with sidewall trims and lift handles	●	●	●	●	●	●	●
Load floor tie-downs (Estate only)	●	●	●	●	●	●	●
Load protection net, extends from load floor to headlining behind 2nd row seats (Estate only)	○	○	○	○	○	○	○
Dog guard. Available in two versions for fitment behind the first or second row seats (Estate only)	○	○	○	○	○	○	○
Fixing hooks in side trim for luggage net, 2 per side (Estate only)	●	●	●	●	●	●	●
Load Floor – Sliding (Estate with Instant Mobility System. Does not come with spare wheel)	○	○	○	○	○	○	○
Package tray – Tilting, removable (5-door only)	●	●	●	●	●	●	●
Tonneau cover with grab handle (Estate only)	●	●	●	●	●	●	●
12V power socket, rear (Estate only)	●	●	●	●	●	●	●

● = Standard, ○ = Optional, at extra cost. □ = Included with another feature or part of an option pack, at extra cost.

Option packs

	Edge	Zetec	ECONetic	Ghia	Titanium	Titanium X	Titanium X Sport
Comfort Pack – Ford Convers+ premium instrument cluster, Tyre Pressure Monitoring System, Park Assist - Front and rear sensors	○	○	○				
Ghia X Pack – Keyless entry and start system with 'Ford Power' starter button, Bi-Xenon Front Lighting System with fixed xenon headlights and static cornering lights, and Leather seat trim (not available to order with Ford Individual Interior Styling Pack)				○			
Zetec Sport Pack – 17" Y-spoke alloy wheels with 235/45 Rx17 tyres, sports suspension, rear spoiler (not available on 4 door or 1.6 125PS Duratec petrol or 5 doors with 6 speed automatic transmissions)		○					
Sport Pack – 18" Y-spoke alloy wheels with 235/40 Rx18 tyres, sports suspension, rear spoiler (not available on 4 door, 1.6 125PS Duratec petrol, 5 doors with 6 speed automatic transmissions or 2.0 115PS TDCi)	○			○	○		●
Sport Appearance Pack – Privacy glass, alloy pedals, sports suspension, rear spoiler (not available on 4 door or 5 doors with 6 speed automatic transmissions)						○	
Style Pack (Estate only) – 18" Y-spoke alloy wheels with 235/40 Rx18 tyres, privacy glass, and roof rails with silver-painted finish. Not available on Zetec 1.6 125PS Duratec petrol, or 2.0 115PS TDCi	○			○	○		
Ford Individual Interior Styling Pack – Premium quality full-leather seats with Ford 'Individual' script embossed into the front seatbacks. Pack includes pedals with alloy finish, scuff plates with 'Individual' script, 8-way power adjustment for the driver's and front passenger's seats including manual lumbar adjust and driver's memory seat, and heated front seats. Not available to order with Ghia X Pack, climate seats or integrated child seats.				○	○		
Safety Pack – Metallic Paint, Front & Rear Park Assist, Tyre pressure Monitoring System (TPMS)	○						
Safety Pack with Navigation – Advanced Navigation System with 5" colour display, full European mapping (data on 4g SD Card) and USB, Metallic Paint, Front & Rear Park Assist, Tyre pressure Monitoring System (TPMS)				○	○	○	○

○ = Optional, at extra cost



Adaptive Cruise Control (ACC) with Forward Alert (FA)

Adaptive Cruise Control (ACC) not only lets you set your preferred cruising speed but also automatically adjusts your speed to maintain your chosen time gap to the vehicle ahead. (Option; not available on Edge and ECONetic)



Ambient lighting

Bathes the gearshift and centre console in a subtle red glow. (Standard on Ghia, Titanium, Titanium X and Titanium X Sport)



Colour and trim



Choosing the colour and trim for your Ford Mondeo is a defining moment – and an enjoyable one, too. You'll know what's right in an instant.

Solid paint

- 1 Colorado Red **
- 2 Blazer Blue
- 3 Frozen White

Metallic paint*

- 4 Ink Blue
- 5 Hypnotic Silver
- 6 Panther Black
- 7 Sea Grey
- 8 Moondust Silver
- 9 Tango
- 10 Thunder
- 11 Chill
- 12 Avalon

*Metallic body colours are options at extra cost.
** Colorado Red ceases production in November 2009.



1

2



3

4

5



6

7



8

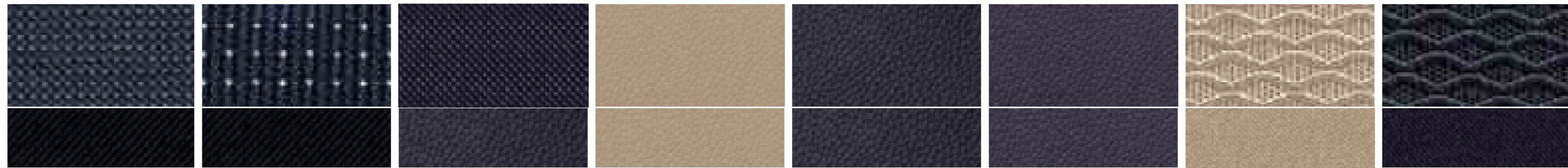
9

10



11

12



Minute in Infinity Blue seat facing
Twill in Ebony seat sides

Daphne in Ebony seat facing
Twill in Ebony seat sides

Airfield in Ebony seat facing
Napoli Leather in Ebony seat sides

Napoli Leather in Biscuit seat facing
Napoli Leather in Biscuit seat sides

Napoli Leather in Ebony seat facing
Napoli Leather in Ebony seat sides

Napoli Leather in Infinity Blue seat facing
Napoli Leather in Infinity Blue seat sides

Gillos in Biscuit seat facing
Satin in Biscuit seat sides

Gillos in Ebony seat facing
Satin in Ebony seat sides

Colour and trim

Model	Edge	Zetec & ECONetic	Ghia		Titanium			Titanium X		Titanium X Sport	
Seat trim	Minute	Daphne	Airfield cloth**	Gillos	Gillos	Napoli leather**	Napoli leather**	New York	Alcantara perforated**	Alcantara perforated	Alcantara perforated
Seat trim colour	Infinity Blue	Ebony	Ebony	Ebony	Biscuit	Ebony	Biscuit	Ebony	Ebony Platinum	Ebony Platinum	Ebony Platinum
Bolster trim	Twill	Twill	Napoli leather**	Lux	Lux	Napoli leather**	Napoli leather**	Lux	Napoli leather**	Napoli leather	Napoli leather
Bolster trim colour	Ebony	Ebony	Ebony	Ebony	Biscuit	Ebony	Biscuit	Ebony	Ebony	Ebony	Ebony
Door trim	Excelsior	Excelsior	Taurus	Excelsior	Excelsior	Taurus	Taurus	Excelsior	Taurus	Taurus	Taurus
Door trim colour	Ebony	Ebony	Ebony	Ebony	Biscuit	Ebony	Biscuit	Ebony	Ebony	Ebony	Ebony
Environment colour: Upper	Ebony	Ebony	Ebony	Ebony	Ebony	Ebony	Ebony	Ebony	Ebony	Ebony	Ebony
Environment colour: Lower	Ebony	Ebony	Ebony	Ebony	Biscuit	Ebony	Biscuit	Ebony	Ebony	Ebony	Ebony
Solid body colours											
Blazer Blue	I	E	E	E	B	E	B	E	E	E	
Frozen White	I	E	E	E	B	E	B	E	E	E	E+
Metallic body colours*											
Tango	I	E	E	E	B	E	B	E	E	E	
Ink Blue	I	E	E	E	B	E	B	E	E	E	
Hypnotic Silver	I	E	E	E	B	E	B	E	E	E	E+
Sea Grey	I	E	E	E	B	E	B	E	E	E	E+
Panther Black	I	E	E	E	B	E	B	E	E	E	E+
Chill	I	E	E	E	B	E	B	E	E	E	
Thunder	I	E	E	E	B	E	B	E	E	E	E+
Avalon	I	E	E	E	B	E	B	E	E	E	

Seat trim colour key: I = Infinity Blue; E = Ebony; E+ = Ebony with red contrast stitching; B = Biscuit * Metallic paint is an option at extra cost. ** Leather, Alcantara/leather and partial leather trim are options, at extra cost (except Titanium X and Titanium X Sport where Alcantara/leather trim is standard). Mondeo Ghia equipped with optional climate front seats come with perforated leather when leather option (at extra cost) is chosen.

New York in Ebony seat facing
Satin in Ebony seat sides

Alcantara Perforated in Ebony/Platinum
seat facing
Napoli Leather in Ebony seat sides

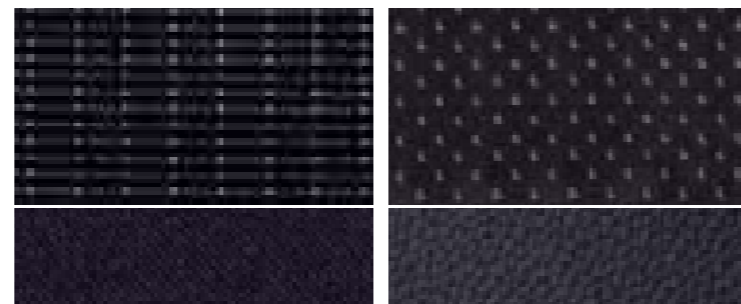
*Partial leather, leather and Alcantara trims are options, at extra cost. Ford Individual full leather only available as part of the optional Ford Mondeo Individual Interior Styling Pack, at extra cost.

Ford Mondeo Individual Interior Styling Pack in Beige/Dark Beige* [A2TAF]. Available with Biscuit interior. Available for Ghia.

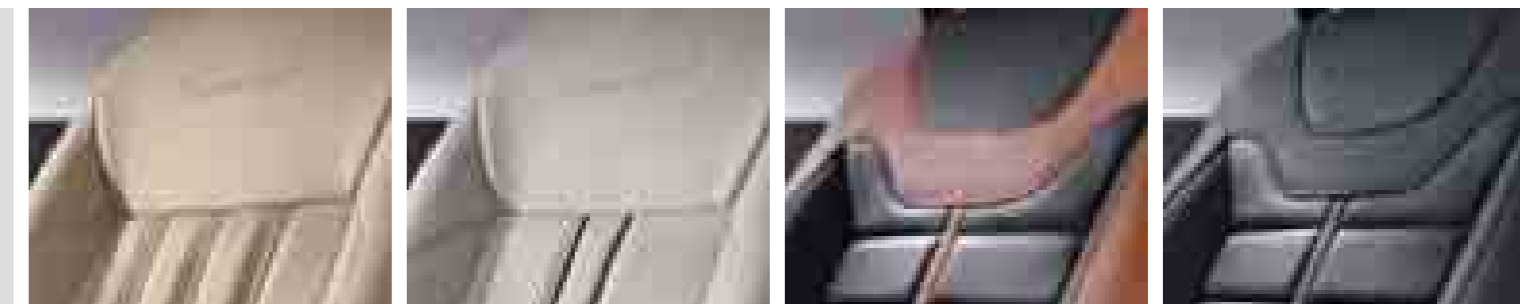
Ford Mondeo Individual Interior Styling Pack in Beige with Ebony piping* [A2TAE]. Available with Ebony interior. Available for Ghia and Titanium.

Ford Mondeo Individual Interior Styling Pack in Tan/Ebony* [A2TAG]. Available with Ebony interior. Available for Titanium.

Ford Mondeo Individual Interior Styling Pack in Ebony* [A2TAH]. Available with Ebony interior. Available for Titanium.



Ford Mondeo Individual
Choose between four unique full-leather seat trims as part of the Ford Mondeo Individual Interior Styling Packs. Please ask your Ford Dealer for further details or refer to the separate Ford Mondeo Individual brochure.





Illustrations, descriptions and specifications. This brochure was correct at the time of going to print. However, Ford policy is one of continuous product development. The right is reserved to change specifications, colours and prices of the models and items illustrated and described in this publication at any time. For the latest details always consult your Ford Dealer. **Optional equipment.** Throughout this publication, wherever a feature is described as being an 'Option' or 'Optional Fitment/Pack', etc., you should assume that it will be at extra cost to the base vehicle, unless specifically stated to the contrary. **All models and colour combinations** are subject to availability. **Note.** Some images portrayed are of a pre-production model and/or are computer generated, therefore, the design/features on the final version of the vehicle may differ in various respects. In addition, some of the features shown on the vehicles may be optional. **Note.** This brochure contains both original Ford accessories as well as a range of carefully selected products from our suppliers, which are featured under their own brands. **All supplier branded products** are subject to warranty terms defined by the relevant suppliers and do not lie within the responsibility of Ford. **Note.** The Bluetooth® word mark and logos are owned by the Bluetooth SIG, Inc. and any use of such marks by Ford Motor Company is under licence. Other trademarks and trade names are those of their respective owners.

The Government fuel figures do not express or imply any guarantee of the fuel consumption of any particular car. The cars themselves have not been tested and there are inevitably differences between individual cars of the same model. In addition, a car may incorporate particular modifications. Furthermore, the driver's style and road and traffic conditions, as well as the extent to which the car has been driven and the standard of maintenance, will affect its fuel consumption. **Insurance groups** are only as recommended by the Association of British Insurers. You should always consult your insurance adviser for confirmation. ***Ford Information Service.** Calls are charged at national rate and may be recorded for training purposes.



Allergy-tested interior All materials used in the manufacture of the interior of this vehicle meet the strict requirements of the TÜV TOXPROOF Criteria Catalogue for Vehicle Interiors by the TÜV Produkt und Umwelt GmbH and are designed to minimise the risk of allergic reactions. With doors and windows closed, the interior materials selected – together with the integrated pollen filter – protect the passengers against most allergising particles from the outdoor air. At higher temperatures, the additional use of air conditioning is recommended.



Ford recommends BP.



Collect Nectar points at participating Ford Dealers now. So keep a look out for the latest Ford offers at www.ford.co.uk/nectar or call the Ford Information Service on 0845 7111 888. Calls are charged at national rate and may be recorded for training purposes.



Published by Ford Motor Company Limited,
Brentwood, Essex, England.
Registered in England No. 235446.
FA 1525/5
BJN 306665. FoE H39E.
PN 874503/1009/40m/GBR en
October 2009
© Ford Motor Company Limited.

www.ford.co.uk
08457 111 888*

